

For Research Use Only

Cubilin Polyclonal antibody, PBS Only

Catalog Number: 31992-1-PBS



Basic Information

| | | |
|---|--|--|
| Catalog Number: 31992-1-PBS | GenBank Accession Number: NM_001081 | Purification Method: Antigen affinity Purification |
| Size: 100ug , Concentration: 1 mg/ml by Nanodrop; | GeneID (NCBI): 8029 | |
| Source: Rabbit | UNIPROT ID: O60494 | |
| Isotype: IgG | Full Name: cubilin (intrinsic factor-cobalamin receptor) | |
| Immunogen Catalog Number: AG35808 | Calculated MW: 398kDa | |
| | Observed MW: 450 kDa | |

Applications

Tested Applications:
WB, Indirect ELISA

Species Specificity:
human, mouse

Background Information

Cubilin (CUBN) acts as a receptor for intrinsic factor-vitamin B12 complexes. Cubilin is located within the epithelium of intestine and kidney. Mutations in CUBN may play a role in autosomal recessive megaloblastic anemia. Cubilin is an endocytic receptor which plays a role in lipoprotein, vitamin and iron metabolism by facilitating their uptake (PMID: 9572993). Cubilin Acts together with LRP2 to mediate endocytosis of high-density lipoproteins, GC, hemoglobin, ALB, TF and SCGB1A1, which also acts together with AMN to mediate endocytosis of the CBLIF-cobalamin complex (PMID: 14576052). There are multiple glycosylation sites on Cubilin.

Storage

Storage:
Store at -80°C.

Storage Buffer:
PBS only, pH7.3

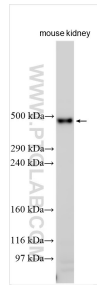
For technical support and original validation data for this product please contact:

T: 1 (888) 4PTGLAB (1-888-478-4522) (toll free in USA), or 1(312) 455-8498 (outside USA)

E: proteintech@ptglab.com
W: ptglab.com

This product is exclusively available under Proteintech Group brand and is not available to purchase from any other manufacturer.

Selected Validation Data



Various lysates were subjected to Tris-Acetate gel system followed by western blot with 31992-1-AP (CUBN antibody) at dilution of 1:800 incubated at room temperature for 1.5 hours. This data was developed using the same antibody clone with 31992-1-PBS in a different storage buffer formulation.