

For Research Use Only

# HECW2 Polyclonal antibody, PBS Only

Catalog Number:32026-1-PBS



## Basic Information

<b>Catalog Number:</b> 32026-1-PBS	<b>GenBank Accession Number:</b> XM_017004563.1	<b>Purification Method:</b> Antigen affinity Purification
<b>Size:</b> 100ug, Concentration: 1 mg/ml by Nanodrop;	<b>GeneID (NCBI):</b> 57520	
<b>Source:</b> Rabbit	<b>UNIPROT ID:</b> Q9P2P5	
<b>Isotype:</b> IgG	<b>Full Name:</b> HECT, C2 and WW domain containing E3 ubiquitin protein ligase 2	
<b>Immunogen Catalog Number:</b> AG36316	<b>Calculated MW:</b> 176 kDa 1572aa	
	<b>Observed MW:</b> 240 kDa	

## Applications

**Tested Applications:**  
WB, IHC, IF/ICC, Indirect ELISA

**Species Specificity:**  
human

## Background Information

HECW2, also known as NEDL2 (Nedd4-like E3 ubiquitin-protein ligase 2), is a member of the HECT (Homologous to the E6-AP Carboxyl Terminus) family of E3 ubiquitin ligases. It is crucial in various pathophysiological processes, including cell proliferation, apoptosis, autophagy, immune response, and DNA damage repair (PMID: 39529070). HECW2 is known to stabilize and enhance the transcriptional activity of p73, a member of the p53 family of tumor suppressors, which promotes cell cycle arrest and apoptosis and has an essential role in neurodevelopment (PMID: 27389779). In cancer, HECW2 is a promising target for tumor therapy due to its role in regulating cell cycle progression and angiogenesis (PMID: 39529070). In neurodevelopmental disorders, variants in HECW2 have been reported to cause a disorder characterized by hypotonia, seizures, and impaired language (PMID: 34321324).

## Storage

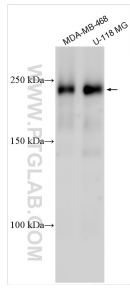
**Storage:**  
Store at -80°C.

**Storage Buffer:**  
PBS only, pH7.3

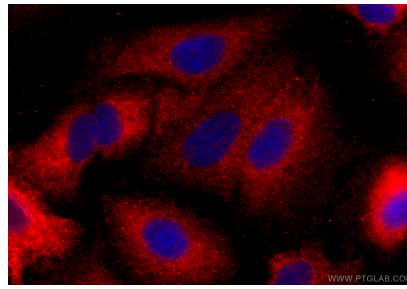
For technical support and original validation data for this product please contact:  
T: 1 (888) 4PTGLAB (1-888-478-4522) (toll free in USA), or 1(312) 455-8498 (outside USA)      E: proteintech@ptglab.com  
W: ptglab.com

This product is exclusively available under Proteintech Group brand and is not available to purchase from any other manufacturer.

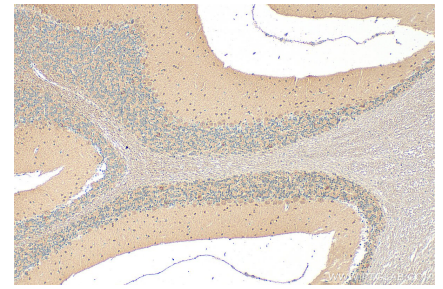
## Selected Validation Data



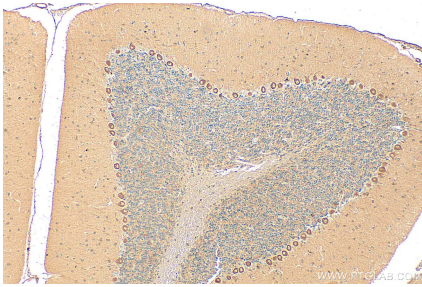
Various lysates were subjected to SDS PAGE followed by western blot with 32026-1-AP (HECW2 antibody) at dilution of 1:500 incubated at room temperature for 1.5 hours. This data was developed using the same antibody clone with 32026-1-PBS in a different storage buffer formulation.



Immunofluorescent analysis of (-20°C Methanol) fixed A549 cells using HECW2 antibody (32026-1-AP) at dilution of 1:400 and CoraLite®594-Conjugated Goat Anti-Rabbit IgG(H+L) (SA00013-4). This data was developed using the same antibody clone with 32026-1-PBS in a different storage buffer formulation.



Immunohistochemical analysis of paraffin-embedded mouse cerebellum tissue slide using 32026-1-AP (HECW2 antibody) at dilution of 1:200 (under 10x lens). Heat mediated antigen retrieval with Tris-EDTA buffer (pH 9.0). This data was developed using the same antibody clone with 32026-1-PBS in a different storage buffer formulation.



Immunohistochemical analysis of paraffin-embedded rat cerebellum tissue slide using 32026-1-AP (HECW2 antibody) at dilution of 1:200 (under 10x lens). Heat mediated antigen retrieval with Tris-EDTA buffer (pH 9.0). This data was developed using the same antibody clone with 32026-1-PBS in a different storage buffer formulation.