

For Research Use Only

RSPH1 Polyclonal antibody

Catalog Number: 32033-1-AP



Basic Information

Catalog Number:

32033-1-AP

Size:

150ul, Concentration: 250 ug/ml by Nanodrop;

Source:

Rabbit

Isotype:

IgG

Immunogen Catalog Number:

AG36560

GenBank Accession Number:

BC101519

GeneID (NCBI):

89765

UNIPROT ID:

Q8WYR4

Full Name:

radial spoke head 1 homolog (Chlamydomonas)

Calculated MW:

309 aa, 35 kDa

Observed MW:

41 kDa

Purification Method:

Antigen affinity Purification

Recommended Dilutions:

WB 1:1000-1:5000

Applications

Tested Applications:

WB, ELISA

Species Specificity:

human

Positive Controls:

WB : human testis tissue,

Background Information

RSPH1 (Radial Spoke Head Component 1) encodes a male mid-meiotic chromosome-associated acidic protein involved in the structure and function of cilia and flagella. Pathogenic variants of RSPH1 lead to impaired spermatocyte motility and aberrant flagellar composition, which further contribute to male infertility. In addition to this, mutations in the RSPH1 gene lead to primary ciliary dyskinesia-24 (PCD-24), an autosomal recessive disorder that affects the motor function of cilia and flagella.

Storage

Storage:

Store at -20°C. Stable for one year after shipment.

Storage Buffer:

PBS with 0.02% sodium azide and 50% glycerol pH 7.3.

Aliquoting is unnecessary for -20°C storage

*** 20ul sizes contain 0.1% BSA

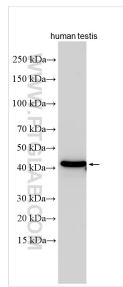
For technical support and original validation data for this product please contact:

T: 1 (888) 4PTGLAB (1-888-478-4522) (toll free in USA), or 1(312) 455-8498 (outside USA)

E: proteintech@ptglab.com
W: ptglab.com

This product is exclusively available under Proteintech Group brand and is not available to purchase from any other manufacturer.

Selected Validation Data



Various lysates were subjected to SDS PAGE followed by western blot with 32033-1-AP (RSPH1 antibody) at dilution of 1:2500 incubated at room temperature for 1.5 hours.