

For Research Use Only

CSF2RA/CD116 Polyclonal antibody

Catalog Number:32058-1-AP



Basic Information

Catalog Number: 32058-1-AP	GenBank Accession Number: NM_009970.2	Purification Method: Antigen affinity Purification
Size: 150ul , Concentration: 500 ug/ml by Nanodrop;	GeneID (NCBI): 12982	Recommended Dilutions: WB: 1:1000-1:4000 IHC: 1:200-1:800
Source: Rabbit	UNIPROT ID: Q00941	
Isotype: IgG	Full Name: colony stimulating factor 2 receptor, alpha, low-affinity (granulocyte-macrophage)	
Immunogen Catalog Number: EG2016	Calculated MW: 42kDa	
	Observed MW: 60-70 kDa	

Applications

Tested Applications: WB, IHC, ELISA	Positive Controls: WB : J774A.1 cells, RAW 264.7 cells, rat lung tissue IHC : mouse lung tissue, mouse spleen tissue
Species Specificity: mouse, rat	
Note-IHC: suggested antigen retrieval with TE buffer pH 9.0; (*) Alternatively, antigen retrieval may be performed with citrate buffer pH 6.0	

Background Information

CD116, also named as CSF2RA CDw116 CSF2RAX CSF2RAY CSF2RX CSF2RY GM-CSF-R-alpha GMCSFR and GMR, is a low affinity receptor for granulocyte-macrophage colony-stimulating factor. CD116 transduces a signal that results in the proliferation, differentiation, and functional activation of hematopoietic cells.

Storage

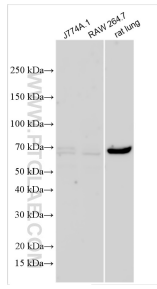
Storage:
Store at -20°C. Stable for one year after shipment.
Storage Buffer:
PBS with 0.02% sodium azide and 50% glycerol, pH7.3
Aliquoting is unnecessary for -20°C storage

*** 20ul sizes contain 0.1% BSA

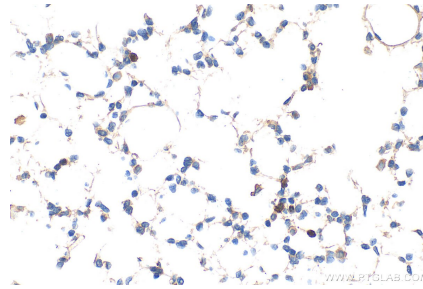
For technical support and original validation data for this product please contact:
T: 1 (888) 4PTGLAB (1-888-478-4522) (toll free in USA), or 1(312) 455-8498 (outside USA) E: proteintech@ptglab.com
W: ptglab.com

This product is exclusively available under Proteintech Group brand and is not available to purchase from any other manufacturer.

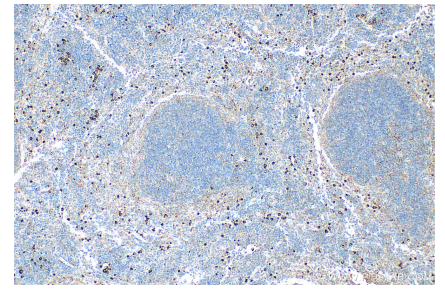
Selected Validation Data



Various lysates were subjected to SDS PAGE followed by western blot with 32058-1-AP (CSF2RA/CD116 antibody) at dilution of 1:2000 incubated at room temperature for 1.5 hours.



Immunohistochemical analysis of paraffin-embedded mouse lung tissue slide using 32058-1-AP (CSF2RA/CD116 antibody) at dilution of 1:400 (under 40x lens). Heat mediated antigen retrieval with Tris-EDTA buffer (pH 9.0).



Immunohistochemical analysis of paraffin-embedded mouse spleen tissue slide using 32058-1-AP (CSF2RA/CD116 antibody) at dilution of 1:400 (under 10x lens). Heat mediated antigen retrieval with Tris-EDTA buffer (pH 9.0).