

For Research Use Only

KIR2DL4/CD158d Polyclonal antibody, PBS Only

Catalog Number: 32059-1-PBS



Basic Information

Catalog Number:

32059-1-PBS

Size:

100ug, Concentration: 1 mg/ml by
Nanodrop;

Source:

Rabbit

Isotype:

IgG

Immunogen Catalog Number:

EG1895

GenBank Accession Number:

BC041611

GeneID (NCBI):

3805

UNIPROT ID:

Q99706

Full Name:

killer cell immunoglobulin-like
receptor, two domains, long
cytoplasmic tail, 4

Calculated MW:

377 aa, 42 kDa

Observed MW:

45 kDa

Purification Method:

Antigen affinity Purification

Applications

Tested Applications:

WB, IF/ICC, Indirect ELISA

Species Specificity:

human

Background Information

Killer cell immunoglobulin-like receptors (KIRs) are transmembrane glycoproteins expressed by natural killer cells and subsets of T cells that regulate their responsiveness to signals received from their environment (PMID: 22934097). Killer cell immunoglobulin-like receptor 2DL4 (KIR2DL4, also known as CD158D and KIR103AS) is an unusual member of the KIRs family, which activates the cytotoxicity of NK cells. KIR2DL4 has two immunoglobulin domains and a single immunoreceptor tyrosine-based inhibition motif (ITIM) in the cytoplasmic tail with weak inhibitory potential (PMID: 12055234).

Storage

Storage:

Store at -80°C.

Storage Buffer:

PBS only, pH7.3

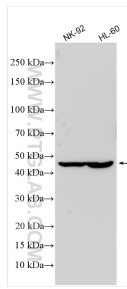
For technical support and original validation data for this product please contact:

T: 1 (888) 4PTGLAB (1-888-478-4522) (toll free
in USA), or 1(312) 455-8498 (outside USA)

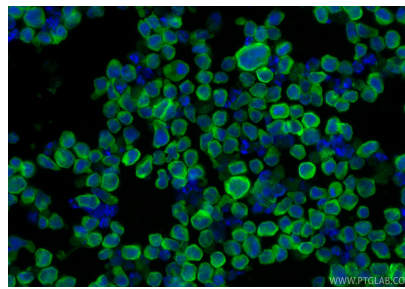
E: proteintech@ptglab.com
W: ptglab.com

This product is exclusively available under Proteintech Group brand and is not available to purchase from any other manufacturer.

Selected Validation Data



Various lysates were subjected to SDS PAGE followed by western blot with 32059-1-AP (KIR2DL4 antibody) at dilution of 1:1000 incubated at room temperature for 1.5 hours. This data was developed using the same antibody clone with 32059-1-PBS in a different storage buffer formulation.



Immunofluorescent analysis of (4% PFA) fixed NK-92 cells using KIR2DL4/CD158d antibody (32059-1-AP) at dilution of 1:400 and CoraLite® 488-Conjugated Goat Anti-Rabbit IgG(H+L) (SA00013-2). This data was developed using the same antibody clone with 32059-1-PBS in a different storage buffer formulation.