

For Research Use Only

FBXO16 Polyclonal antibody

Catalog Number: 32063-1-AP



Basic Information

Catalog Number:

32063-1-AP

Size:

150ul, Concentration: 450 ug/ml by Nanodrop;

Source:

Rabbit

Isotype:

IgG

Immunogen Catalog Number:

AG36230

GenBank Accession Number:

BC074986

GeneID (NCBI):

157574

UNIPROT ID:

Q8IX29

Full Name:

F-box protein 16

Calculated MW:

292 aa, 35 kDa

Observed MW:

35 kDa

Purification Method:

Antigen affinity Purification

Recommended Dilutions:

WB 1:1000-1:4000

Applications

Tested Applications:

WB, ELISA

Species Specificity:

human

Positive Controls:

WB : MCF-7 cells, T-47D cells

Background Information

FBXO16 is a member of the F-box protein family, which functions as a substrate recognition subunit of the SCF (Skp1-Cullin-F-box) E3 ubiquitin ligase complex. High expression levels of FBXO16 are associated with better prognosis in cancer patients. For example, in ovarian cancer, patients with higher FBXO16 expression tend to have a more favorable outcome (PMID: 34333526). This suggests that FBXO16 could serve as a potential biomarker for cancer prognosis and therapeutic targeting.

Storage

Storage:

Store at -20°C. Stable for one year after shipment.

Storage Buffer:

PBS with 0.02% sodium azide and 50% glycerol

Aliquoting is unnecessary for -20°C storage

*** 20ul sizes contain 0.1% BSA

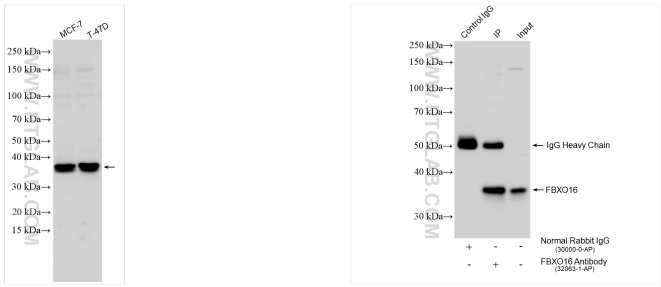
For technical support and original validation data for this product please contact:

T: 1 (888) 4PTGLAB (1-888-478-4522) (toll free in USA), or 1(312) 455-8498 (outside USA)

E: proteintech@ptglab.com
W: ptglab.com

This product is exclusively available under Proteintech Group brand and is not available to purchase from any other manufacturer.

Selected Validation Data



Various lysates were subjected to SDS PAGE followed by western blot with 32063-1-AP (FBXO16 antibody) at dilution of 1:2000 incubated at room temperature for 1.5 hours.

IP result of anti-FBXO16 (IP:32063-1-AP, 4ug; Detection:32063-1-AP 1:1000) with T-47D cells lysate 1120 ug.