

For Research Use Only

SLC66A2 Polyclonal antibody, PBS Only

Catalog Number: 32069-1-PBS



Basic Information

Catalog Number: 32069-1-PBS	GenBank Accession Number: BC030140	Purification Method: Antigen affinity Purification
Size: 100ug , Concentration: 1 mg/ml by Nanodrop;	GeneID (NCBI): 80148	
Source: Rabbit	UNIPROT ID: Q8N2U9	
Isotype: IgG	Full Name: Solute carrier family 66 member 2	
Immunogen Catalog Number: AG34417	Calculated MW: 30 kDa, 271 aa	
	Observed MW: 37 kDa	

Applications

Tested Applications:
WB, Indirect ELISA

Species Specificity:
human, mouse

Background Information

SLC66A2 is a member of the solute carrier (SLC) family, which plays a significant role in the transport of a variety of molecules across cell and organelle membranes. SLC66A2 is predicted to be involved in phospholipid translocation and retrograde transport, specifically from the endosome to the Golgi apparatus.

Storage

Storage:
Store at -80°C.

Storage Buffer:
PBS Only

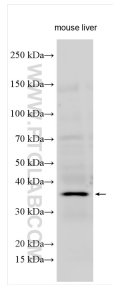
For technical support and original validation data for this product please contact:

T: 1 (888) 4PTGLAB (1-888-478-4522) (toll free in USA), or 1(312) 455-8498 (outside USA)

E: proteintech@ptglab.com
W: ptglab.com

This product is exclusively available under Proteintech Group brand and is not available to purchase from any other manufacturer.

Selected Validation Data



Various lysates were subjected to SDS PAGE followed by western blot with 32069-1-AP (SLC66A2 antibody) at dilution of 1:300 incubated at room temperature for 1.5 hours. This data was developed using the same antibody clone with 32069-1-PBS in a different storage buffer formulation.