

For Research Use Only

# FRY Polyclonal antibody, PBS Only

Catalog Number:32075-1-PBS



## Basic Information

**Catalog Number:**

32075-1-PBS

**Size:**

100ug , Concentration: 1 mg/ml by Nanodrop;

**Source:**

Rabbit

**Isotype:**

IgG

**Immunogen Catalog Number:**

AG34959

**GenBank Accession Number:**

NM\_023037

**GeneID (NCBI):**

10129

**UNIPROT ID:**

Q5TBA9

**Full Name:**

furry homolog (Drosophila)

**Calculated MW:**

339 kDa

**Observed MW:**

340 kDa

**Purification Method:**

Antigen affinity Purification

## Applications

**Tested Applications:**

WB, IHC, IF/ICC, Indirect ELISA

**Species Specificity:**

human

## Background Information

The FRY gene encodes a protein involved in cell cycle regulation and DNA damage response. It plays a crucial role in the G2/M checkpoint, ensuring cells complete DNA repair before entering mitosis by activating the ATR-CHK1 signaling pathway. FRY is expressed in various tissues, including brain, liver, and testis, with notable expression in Sertoli and spermatogonial cells. Aberrant FRY function is associated with multiple diseases, such as cancer and neurodegenerative disorders. In cancer cells, FRY expression can influence proliferation and survival. Understanding FRY's role in cell cycle control and genome stability is vital for elucidating disease mechanisms and developing targeted therapies.

## Storage

**Storage:**

Store at -80°C.

**Storage Buffer:**

PBS only, pH7.3

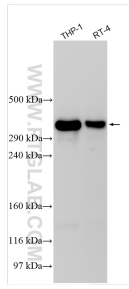
For technical support and original validation data for this product please contact:

T: 1 (888) 4PTGLAB (1-888-478-4522) (toll free in USA), or 1(312) 455-8498 (outside USA)

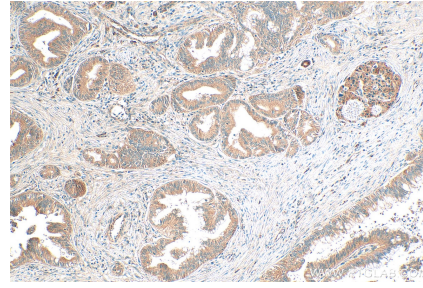
E: [proteintech@ptglab.com](mailto:proteintech@ptglab.com)  
W: [ptglab.com](http://ptglab.com)

**This product is exclusively available under Proteintech Group brand and is not available to purchase from any other manufacturer.**

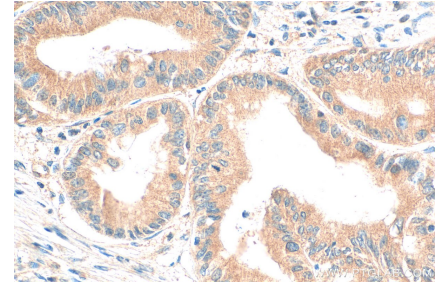
## Selected Validation Data



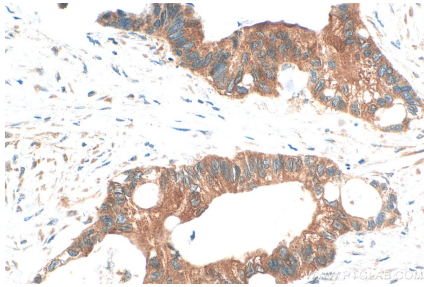
Various lysates were subjected to Tris-Acetate gel system followed by western blot with 32075-1-AP (FRY antibody) at dilution of 1:1500 incubated at room temperature for 1.5 hours. This data was developed using the same antibody clone with 32075-1-PBS in a different storage buffer formulation.



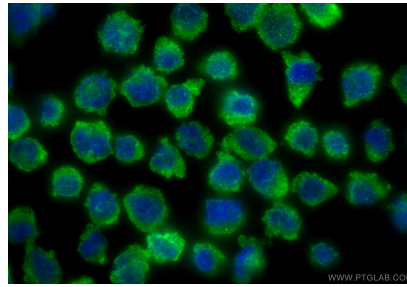
Immunohistochemical analysis of paraffin-embedded human pancreas cancer tissue slide using 32075-1-AP (FRY antibody) at dilution of 1:300 (under 10x lens). Heat mediated antigen retrieval with Tris-EDTA buffer (pH 9.0). This data was developed using the same antibody clone with 32075-1-PBS in a different storage buffer formulation.



Immunohistochemical analysis of paraffin-embedded human pancreas cancer tissue slide using 32075-1-AP (FRY antibody) at dilution of 1:300 (under 40x lens). Heat mediated antigen retrieval with Tris-EDTA buffer (pH 9.0). This data was developed using the same antibody clone with 32075-1-PBS in a different storage buffer formulation.



Immunohistochemical analysis of paraffin-embedded human urothelial carcinoma tissue slide using 32075-1-AP (FRY antibody) at dilution of 1:300 (under 40x lens). Heat mediated antigen retrieval with Tris-EDTA buffer (pH 9.0). This data was developed using the same antibody clone with 32075-1-PBS in a different storage buffer formulation.



Immunofluorescent analysis of (4% PFA) fixed THP-1 cells using FRY antibody (32075-1-AP) at dilution of 1:400 and CoraLite®488-Conjugated Goat Anti-Rabbit IgG(H+L) (SA00013-2). This data was developed using the same antibody clone with 32075-1-PBS in a different storage buffer formulation.