

For Research Use Only

C2orf69 Polyclonal antibody

Catalog Number: 32100-1-AP



Basic Information

Catalog Number: 32100-1-AP	GenBank Accession Number: BC036456	Purification Method: Antigen affinity Purification
Size: 150ul , Concentration: 550 ug/ml by Nanodrop;	GeneID (NCBI): 205327	Recommended Dilutions: WB 1:1000-1:4000 IHC 1:50-1:500
Source: Rabbit	UNIPROT ID: Q8N8R5	
Isotype: IgG	Full Name: chromosome 2 open reading frame 69	
Immunogen Catalog Number: AG36779	Calculated MW: 43 kDa	
	Observed MW: 50 kDa	

Applications

Tested Applications: WB, IHC, ELISA	Positive Controls:
Species Specificity: mouse, rat	WB : mouse stomach tissue, rat stomach tissue
Note-IHC: suggested antigen retrieval with TE buffer pH 9.0; (*) Alternatively, antigen retrieval may be performed with citrate buffer pH 6.0	IHC : mouse kidney tissue,

Background Information

Chromosome 2 open reading frame 69 (C2orf69, also known as COXPD53) is located in the mitochondrion. It can affect mitochondrial membrane potential and oxidative respiration in cultured neurons and controls the levels of the glycogen branching enzyme 1 (GBE1) (PMID: 34038740; 33945503). The variant in C2orf69 probably causes developmental regression, seizures, microcephaly, autistic features, and hypertonia (PMID: 37337918). Its deficiency can disrupt the development and homeostasis of the immune and central nervous systems (PMID: 34038740).

Storage

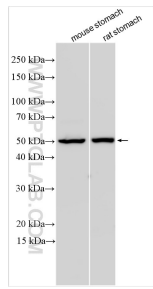
Storage:
Store at -20°C. Stable for one year after shipment.
Storage Buffer:
PBS with 0.02% sodium azide and 50% glycerol, pH7.3
Aliquoting is unnecessary for -20°C storage

*** 20ul sizes contain 0.1% BSA

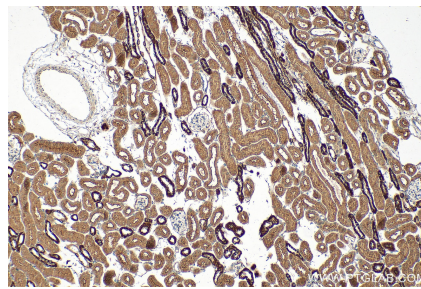
For technical support and original validation data for this product please contact:
T: 1 (888) 4PTGLAB (1-888-478-4522) (toll free in USA), or 1(312) 455-8498 (outside USA)
E: proteintech@ptglab.com
W: ptglab.com

This product is exclusively available under Proteintech Group brand and is not available to purchase from any other manufacturer.

Selected Validation Data



Various lysates were subjected to SDS PAGE followed by western blot with 32100-1-AP (C2orf69 antibody) at dilution of 1:2000 incubated at room temperature for 1.5 hours.



Immunohistochemical analysis of paraffin-embedded mouse kidney tissue slide using 32100-1-AP (C2orf69 antibody) at dilution of 1:200 (under 10x lens). Heat mediated antigen retrieval with Tris-EDTA buffer (pH 9.0).