

For Research Use Only

# BCL9L Polyclonal antibody, PBS Only

Catalog Number: 32103-1-PBS



## Basic Information

**Catalog Number:**

32103-1-PBS

**Size:**

100ug, Concentration: 1 mg/ml by Nanodrop;

**Source:**

Rabbit

**Isotype:**

IgG

**Immunogen Catalog Number:**

AG36794

**GenBank Accession Number:**

NM\_182557

**GeneID (NCBI):**

283149

**UNIPROT ID:**

Q86UU0

**Full Name:**

B-cell CLL/lymphoma 9-like

**Calculated MW:**

157 kDa

**Observed MW:**

220 kDa

**Purification Method:**

Antigen affinity Purification

## Applications

**Tested Applications:**

WB, IF/ICC, Indirect ELISA

**Species Specificity:**

human

## Background Information

B-cell CLL/lymphoma 9-like protein (BCL9L, also known as B9L, BCL9-2, and DLNB11) is a transcriptional regulator that acts as an activator, which locates in nucleolus and nucleoplasm (PMID: 33767438). It is predicted to be implicated in the WNT- $\beta$ -catenin signaling pathway to regulate the progress of hepatocellular carcinoma, breast cancer, and colon cancer (PMID: 31440992; 34545187; 30698996).

## Storage

**Storage:**

Store at -80°C.

**Storage Buffer:**

PBS Only

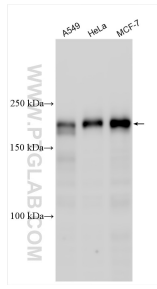
For technical support and original validation data for this product please contact:

T: 1 (888) 4PTGLAB (1-888-478-4522) (toll free in USA), or 1(312) 455-8498 (outside USA)

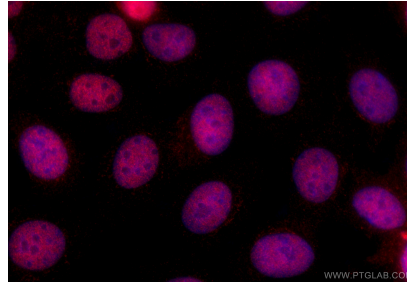
E: [proteintech@ptglab.com](mailto:proteintech@ptglab.com)  
W: [ptglab.com](http://ptglab.com)

**This product is exclusively available under Proteintech Group brand and is not available to purchase from any other manufacturer.**

## Selected Validation Data



Various lysates were subjected to SDS PAGE followed by western blot with 32103-1-AP (BCL9L antibody) at dilution of 1:2000 incubated at room temperature for 1.5 hours. This data was developed using the same antibody clone with 32103-1-PBS in a different storage buffer formulation.



Immunofluorescent analysis of (4% PFA) fixed MCF-7 cells using BCL9L antibody (32103-1-AP) at dilution of 1:800 and CoraLite@594-Conjugated Goat Anti-Rabbit IgG(H+L) (SA00013-4). This data was developed using the same antibody clone with 32103-1-PBS in a different storage buffer formulation.