

For Research Use Only

LRRC45 Polyclonal antibody

Catalog Number: 32111-1-AP



Basic Information

Catalog Number:

32111-1-AP

Size:

150ul, Concentration: 400 ug/ml by Nanodrop;

Source:

Rabbit

Isotype:

IgG

Immunogen Catalog Number:

AG36776

GenBank Accession Number:

BC014109

GeneID (NCBI):

201255

UNIPROT ID:

Q96CN5

Full Name:

leucine rich repeat containing 45

Calculated MW:

76 kDa

Observed MW:

70 kDa

Purification Method:

Antigen affinity Purification

Recommended Dilutions:

WB 1:1000-1:4000

IF/ICC 1:200-1:800

Applications

Tested Applications:

WB, IF/ICC, ELISA

Species Specificity:

human

Positive Controls:

WB : HepG2 cells, HeLa cells, HEK-293 cells, U2OS cells

IF/ICC : A431 cells, U-251 cells

Background Information

The Leucine-Rich Repeat-Containing 45 (LRRC45) gene, a relatively unexplored entity in the realm of genomic studies, has recently garnered attention for its potential role in cellular processes and disease pathogenesis. Characterized by its leucine-rich repeats, a motif known for facilitating protein-protein interactions, LRRC45 is implicated in various cellular functions, including signal transduction and intracellular trafficking. LRRC45 promotes lung cancer proliferation and progression by enhancing c-MYC, Slug, MMP2, and MMP9 expression (PMID: 39326735).

Storage

Storage:

Store at -20°C. Stable for one year after shipment.

Storage Buffer:

PBS with 0.02% sodium azide and 50% glycerol pH 7.3.

Aliquoting is unnecessary for -20°C storage

*** 20ul sizes contain 0.1% BSA

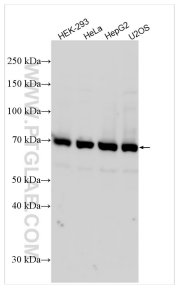
For technical support and original validation data for this product please contact:

T: 1 (888) 4PTGLAB (1-888-478-4522) (toll free in USA), or 1(312) 455-8498 (outside USA)

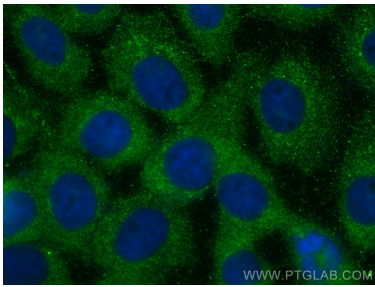
E: proteintech@ptglab.com
W: ptglab.com

This product is exclusively available under Proteintech Group brand and is not available to purchase from any other manufacturer.

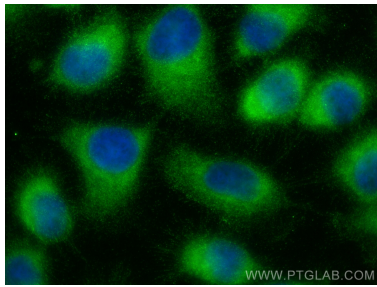
Selected Validation Data



Various lysates were subjected to SDS PAGE followed by western blot with 32111-1-AP (LRRC45 antibody) at dilution of 1:2000 incubated at room temperature for 1.5 hours.



Immunofluorescent analysis of (-20°C Methanol) fixed A431 cells using LRRC45 antibody (32111-1-AP) at dilution of 1:400 and Multi-rAb CoraLite® Plus 488-Goat Anti-Rabbit Recombinant Secondary Antibody (H+L) (RGAR002).



Immunofluorescent analysis of (-20°C Ethanol) fixed U-251 cells using LRRC45 antibody (32111-1-AP) at dilution of 1:400 and Multi-rAb CoraLite® Plus 488-Goat Anti-Rabbit Recombinant Secondary Antibody (H+L) (RGAR002).