

For Research Use Only

NSMCE1 Polyclonal antibody

Catalog Number: 32113-1-AP



Basic Information

Catalog Number:

32113-1-AP

Size:

150ul, Concentration: 400 ug/ml by Nanodrop;

Source:

Rabbit

Isotype:

IgG

Immunogen Catalog Number:

AG36841

GenBank Accession Number:

BC018938

GeneID (NCBI):

197370

UNIPROT ID:

Q8WV22

Full Name:

non-SMC element 1 homolog (S. cerevisiae)

Calculated MW:

31 kDa

Observed MW:

31 kDa

Purification Method:

Antigen affinity Purification

Recommended Dilutions:

WB 1:1000-1:6000

Applications

Tested Applications:

WB, ELISA

Species Specificity:

human

Positive Controls:

WB : HL-60 cells, HepG2 cells, LNCaP cells, Raji cells, U-87 MG cells

Background Information

Non-structural maintenance of chromosomes element 1 homolog (NSMCE1, also known as NSE1) located in the nucleoplasm, which involves the maintenance of genome integrity, DNA damage response, and DNA repair (PMID: 18086888; 20864041; 29225034). NSMCE3/MAGEG1 and NSMCE1 ubiquitin ligase are components of the SMC5-SMC6 complex and may positively regulate homologous recombination-mediated DNA repair (PMID: 18086888).

Storage

Storage:

Store at -20°C. Stable for one year after shipment.

Storage Buffer:

PBS with 0.02% sodium azide and 50% glycerol pH 7.3.

Aliquoting is unnecessary for -20°C storage

*** 20ul sizes contain 0.1% BSA

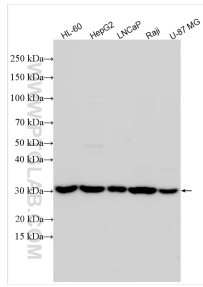
For technical support and original validation data for this product please contact:

T: 1 (888) 4PTGLAB (1-888-478-4522) (toll free in USA), or 1(312) 455-8498 (outside USA)

E: proteintech@ptglab.com
W: ptglab.com

This product is exclusively available under Proteintech Group brand and is not available to purchase from any other manufacturer.

Selected Validation Data



Various lysates were subjected to SDS PAGE followed by western blot with 32113-1-AP (NSMCE1 antibody) at dilution of 1:3000 incubated at room temperature for 1.5 hours.