

For Research Use Only

SBK2 Polyclonal antibody, PBS Only

Catalog Number: 32117-1-PBS



Basic Information

Catalog Number:

32117-1-PBS

Size:

100ug , Concentration: 1 mg/ml by Nanodrop;

Source:

Rabbit

Isotype:

IgG

Immunogen Catalog Number:

AG37233

GenBank Accession Number:

NM_001101401

GeneID (NCBI):

646643

UNIPROT ID:

POC263

Full Name:

SH3-binding domain kinase family, member 2

Calculated MW:

38 kDa

Observed MW:

30 kDa

Purification Method:

Antigen affinity Purification

Applications

Tested Applications:

WB, IF/ICC, Indirect ELISA

Species Specificity:

human

Background Information

SH3 domain binding kinase family member 2 (SBK2, also known as SGK069), is an evolutionarily conserved putative serine/threonine protein kinase that plays a crucial role in cardiomyocyte differentiation, particularly in the formation and maintenance of sarcomeres. It is highly atrium-enriched and is muscle-specific, indicating its specialized function in cardiac muscle cells (PMID: 35587025). SBK2 may be useful for identifying and co-registering tumor borders during surgical resection (PMID: 23730413).

Storage

Storage:

Store at -80°C.

Storage Buffer:

PBS Only

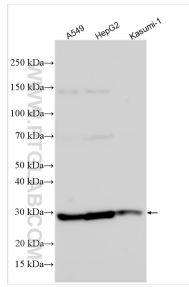
For technical support and original validation data for this product please contact:

T: 1 (888) 4PTGLAB (1-888-478-4522) (toll free in USA), or 1(312) 455-8498 (outside USA)

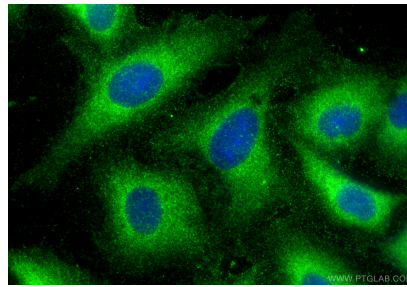
E: proteintech@ptglab.com
W: ptglab.com

This product is exclusively available under Proteintech Group brand and is not available to purchase from any other manufacturer.

Selected Validation Data



Various lysates were subjected to SDS PAGE followed by western blot with 32117-1-AP (SBK2 antibody) at dilution of 1:5000 incubated at room temperature for 1.5 hours. This data was developed using the same antibody clone with 32117-1-PBS in a different storage buffer formulation.



Immunofluorescent analysis of (-20°C Methanol) fixed A549 cells using SBK2 antibody (32117-1-AP) at dilution of 1:400 and CoraLite® 488-Conjugated Goat Anti-Rabbit IgG(H+L) (SA00013-2). This data was developed using the same antibody clone with 32117-1-PBS in a different storage buffer formulation.