

For Research Use Only

MTHFSD Polyclonal antibody

Catalog Number: 32122-1-AP



Basic Information

Catalog Number:

32122-1-AP

Size:

150ul , Concentration: 750 ug/ml by Nanodrop;

Source:

Rabbit

Isotype:

IgG

Immunogen Catalog Number:

AG37100

GenBank Accession Number:

BC112059

GeneID (NCBI):

64779

UNIPROT ID:

Q2M296

Full Name:

methenyltetrahydrofolate synthetase domain containing

Observed MW:

45 kDa

Purification Method:

Antigen affinity Purification

Recommended Dilutions:

WB 1:1000-1:4000

Applications

Tested Applications:

WB, ELISA

Species Specificity:

human

Positive Controls:

WB : A549 cells, HaCaT cells, MCF-7 cells

Background Information

MTHFSD is an RNA-binding protein that contains a methyltetrahydrofolate synthase structural domain and an RRM structural domain. In healthy motor neurons, MTHFSD is predominantly located in the nucleus, and studies have shown that MTHFSD, as a novel marker of stress granules, may be associated with aggregated proteins involved in amyotrophic lateral sclerosis (ALS).

Storage

Storage:

Store at -20°C. Stable for one year after shipment.

Storage Buffer:

PBS with 0.02% sodium azide and 50% glycerol pH 7.3.

Aliquoting is unnecessary for -20°C storage

*** 20ul sizes contain 0.1% BSA

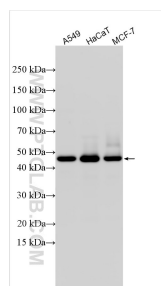
For technical support and original validation data for this product please contact:

T: 1 (888) 4PTGLAB (1-888-478-4522) (toll free in USA), or 1(312) 455-8498 (outside USA)

E: proteintech@ptglab.com
W: ptglab.com

This product is exclusively available under Proteintech Group brand and is not available to purchase from any other manufacturer.

Selected Validation Data



Various lysates were subjected to SDS PAGE followed by western blot with 32122-1-AP (MTHFSD antibody) at dilution of 1:2000 incubated at room temperature for 1.5 hours.