

For Research Use Only

# Klrb1a/CD161a Polyclonal antibody

Catalog Number: 32132-1-AP



## Basic Information

### Catalog Number:

32132-1-AP

### Size:

150ul , Concentration: 450 ug/ml by Nanodrop;

### Source:

Rabbit

### Isotype:

IgG

### GenBank Accession Number:

NM\_001010964.1

### GeneID (NCBI):

362443

### UNIPROT ID:

P27471

### Full Name:

killer cell lectin-like receptor subfamily B, member 1A

### Calculated MW:

25 kDa

### Observed MW:

35 kDa

### Purification Method:

Antigen affinity Purification

### Recommended Dilutions:

WB 1:500-1:2000

## Applications

### Tested Applications:

WB, ELISA

### Species Specificity:

mouse, rat

### Positive Controls:

WB : mouse spleen tissue, rat liver tissue

## Background Information

Rat Klrb1a, also known as CD161a or NKR-PLA, is a type II membrane glycoprotein that belongs to the C-type lectin superfamily (PMID: 12618485). It is composed of an extracellular region, which contains a C-type lectin domain, a transmembrane region, and a cytoplasmic domain. Klrb1a is expressed on rat natural killer (NK) cells and functions as an activation receptor (PMID: 7722466; 12618485).

## Storage

### Storage:

Store at -20°C. Stable for one year after shipment.

### Storage Buffer:

PBS with 0.02% sodium azide and 50% glycerol pH 7.3.

Aliquoting is unnecessary for -20°C storage

\*\*\* 20ul sizes contain 0.1% BSA

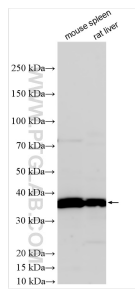
For technical support and original validation data for this product please contact:

T: 1 (888) 4PTGLAB (1-888-478-4522) (toll free in USA), or 1(312) 455-8498 (outside USA)

E: [proteintech@ptglab.com](mailto:proteintech@ptglab.com)  
W: [ptglab.com](http://ptglab.com)

This product is exclusively available under Proteintech Group brand and is not available to purchase from any other manufacturer.

## Selected Validation Data



Various lysates were subjected to SDS PAGE followed by western blot with 32132-1-AP (Klr1a/CD161a antibody) at dilution of 1:1000 incubated at room temperature for 1.5 hours.