

For Research Use Only

EPCR/CD201 Polyclonal antibody

Catalog Number: 32134-1-AP



Basic Information

Catalog Number: 32134-1-AP	GenBank Accession Number: NM_011171.2	Purification Method: Antigen affinity Purification
Size: 150ul , Concentration: 400 ug/ml by Nanodrop;	GeneID (NCBI): 19124	Recommended Dilutions: WB 1:500-1:3000 IHC 1:200-1:800
Source: Rabbit	UNIPROT ID: Q64695	
Isotype: IgG	Full Name: protein C receptor, endothelial	
	Calculated MW: 27kDa	
	Observed MW: 27 kDa, 40-50 kDa	

Applications

Tested Applications: WB, IHC, ELISA	Positive Controls:
Species Specificity: human, mouse	WB : THP-1 cells, bEnd.3 cells
Note-IHC: suggested antigen retrieval with TE buffer pH 9.0; (*) Alternatively, antigen retrieval may be performed with citrate buffer pH 6.0	IHC : human placenta tissue,

Background Information

Protein C receptor (PROCR), also known as activated protein C receptor (APC receptor), EPCR, or CD201, is a transmembrane glycoprotein. EPCR promotes the activation of protein C, which has anticoagulant and cytoprotective effects. EPCR facilitates the activation of protein C by the thrombin-thrombomodulin complex but also facilitates APC-mediated cytoprotective effects on cells that involve the activation of protease-activated receptors (PAR) 1 and 3 (PMID: 27207424). EPCR is approximately 46 kDa, truncated EPCR is 23 kDa, truncated EPCR with the transmembrane domain is 26 kDa, and soluble EPCR is 43 kDa (PMID: 11686350).

Storage

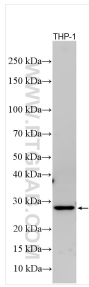
Storage:
Store at -20°C. Stable for one year after shipment.
Storage Buffer:
PBS with 0.02% sodium azide and 50% glycerol
Aliquoting is unnecessary for -20°C storage

***** 20ul sizes contain 0.1% BSA**

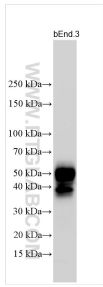
For technical support and original validation data for this product please contact:
T: 1 (888) 4PTGLAB (1-888-478-4522) (toll free in USA), or 1(312) 455-8498 (outside USA)
E: proteintech@ptglab.com
W: ptglab.com

This product is exclusively available under Proteintech Group brand and is not available to purchase from any other manufacturer.

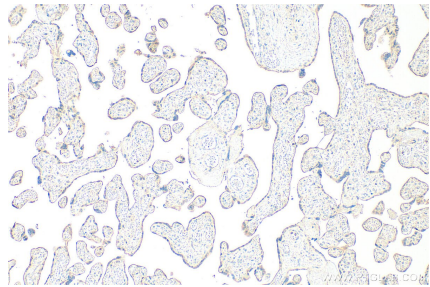
Selected Validation Data



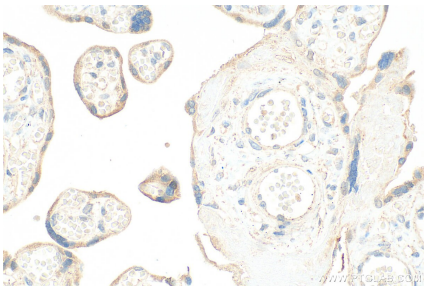
THP-1 cells were subjected to SDS PAGE followed by western blot with 32134-1-AP (EPCR/CD201 antibody) at dilution of 1:1500 incubated at room temperature for 1.5 hours.



bEnd.3 cells were subjected to SDS PAGE followed by western blot with 32134-1-AP (EPCR/CD201 antibody) at dilution of 1:1500 incubated at room temperature for 1.5 hours.



Immunohistochemical analysis of paraffin-embedded human placenta tissue slide using 32134-1-AP (EPCR/CD201 antibody) at dilution of 1:400 (under 10x lens). Heat mediated antigen retrieval with Tris-EDTA buffer (pH 9.0).



Immunohistochemical analysis of paraffin-embedded human placenta tissue slide using 32134-1-AP (EPCR/CD201 antibody) at dilution of 1:400 (under 40x lens). Heat mediated antigen retrieval with Tris-EDTA buffer (pH 9.0).