

For Research Use Only

UBFD1 Polyclonal antibody, PBS Only

Catalog Number: 32161-1-PBS



Basic Information

Catalog Number:

32161-1-PBS

Size:

100ug, Concentration: 1 mg/ml by Nanodrop;

Source:

Rabbit

Isotype:

IgG

Immunogen Catalog Number:

AG36361

GenBank Accession Number:

NM_019116

GeneID (NCBI):

56061

UNIPROT ID:

O14562

Full Name:

ubiquitin family domain containing 1

Calculated MW:

309aa, 33 kDa

Observed MW:

40 kDa

Purification Method:

Antigen affinity Purification

Applications

Tested Applications:

WB, IF/ICC, Indirect ELISA

Species Specificity:

human, mouse

Background Information

UBFD1 (Ubiquitin Family Domain Containing 1) is a polyubiquitin-binding protein containing ubiquitin-like structural domains that are widely involved in protein degradation and cell signaling. This protein shows aberrant expression in a variety of cancers, especially in estrogen receptor (ER)-positive breast cancer, where high expression of UBFD1 is closely associated with poor prognosis of patients, and is considered as a potential prognostic biomarker and therapeutic target. In addition, UBFD1 was also found to be associated with MYC-mediated tumor aggressiveness in T-cell acute lymphoblastic leukemia (T-ALL), which functionally involves the endoplasmic reticulum-associated degradation (ERAD) pathway. UBFD1 is also expressed in inner ear hair cells and ear epithelial cells, suggesting that it may play a role in hearing-related diseases.

Storage

Storage:

Store at -80°C.

Storage Buffer:

PBS only, pH7.3

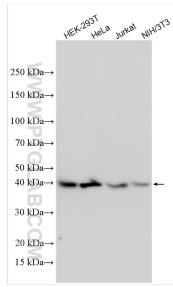
For technical support and original validation data for this product please contact:

T: 1 (888) 4PTGLAB (1-888-478-4522) (toll free in USA), or 1(312) 455-8498 (outside USA)

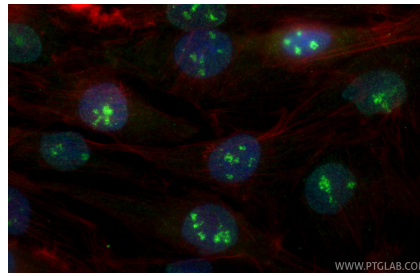
E: proteintech@ptglab.com
W: ptglab.com

This product is exclusively available under Proteintech Group brand and is not available to purchase from any other manufacturer.

Selected Validation Data



Various lysates were subjected to SDS PAGE followed by western blot with 32161-1-AP (UBFD1 antibody) at dilution of 1:2000 incubated at room temperature for 1.5 hours. This data was developed using the same antibody clone with 32161-1-PBS in a different storage buffer formulation.



Immunofluorescent analysis of (4% PFA) fixed ROS1728 cells using UBFD1 antibody (32161-1-AP) at dilution of 1:200 and CoraLite® 488-Conjugated Goat Anti-Rabbit IgG(H+L) (SA00013-2), CL594-phalloidin (red). This data was developed using the same antibody clone with 32161-1-PBS in a different storage buffer formulation.