

For Research Use Only

C1QL3 Polyclonal antibody

Catalog Number: 32175-1-AP



Basic Information

Catalog Number: 32175-1-AP	GenBank Accession Number: BC127716	Purification Method: Antigen affinity Purification
Size: 150ul , Concentration: 500 ug/ml by Nanodrop;	GeneID (NCBI): 389941	Recommended Dilutions: WB: 1:500-1:3000
Source: Rabbit	UNIPROT ID: Q5VWW1	
Isotype: IgG	Full Name: complement component 1, q subcomponent-like 3	
Immunogen Catalog Number: AG37280	Calculated MW: 27 kDa	
	Observed MW: 70 kDa, 27 kDa	

Applications

Tested Applications: WB, ELISA	Positive Controls: WB : SH-SY5Y cells,
Species Specificity: human	

Background Information

C1Q-like (C1QL) proteins bind to the adhesion G protein coupled receptor B3 (ADGRB3) and act at synapses in a subset of circuits. Complement C1q-like 3 (C1QL3, also known as CTRP13) is one of the C1QL proteins. Some C1QL3 migrated as a monomer (~26 kDa) and some as a trimer (60-70 kDa), indicating a desired substantial yet incomplete crosslinking of monomers (PMID: 33337553). The doublet band of trimer probably represents differential posttranslational modifications (PMID: 21378161). Bands of larger molecular weights suggested either trimers cross-linked into higher molecular weight oligomers or C1QL3 cross-linked to binding partners (PMID: 33337553).

Storage

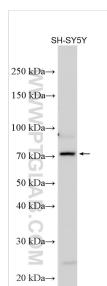
Storage:
Store at -20°C. Stable for one year after shipment.
Storage Buffer:
PBS with 0.02% sodium azide and 50% glycerol, pH7.3
Aliquoting is unnecessary for -20°C storage

*** 20ul sizes contain 0.1% BSA

For technical support and original validation data for this product please contact:
T: 1 (888) 4PTGLAB (1-888-478-4522) (toll free in USA), or 1(312) 455-8498 (outside USA)
E: proteintech@ptglab.com
W: ptglab.com

This product is exclusively available under Proteintech Group brand and is not available to purchase from any other manufacturer.

Selected Validation Data



Various lysates were subjected to SDS PAGE followed by western blot with 32175-1-AP (C1QL3 antibody) at dilution of 1:1500 incubated at room temperature for 1.5 hours.