

For Research Use Only

TOM1L2 Polyclonal antibody

Catalog Number: 32179-1-AP



Basic Information

Catalog Number: 32179-1-AP	GenBank Accession Number: NM_001082968.1	Purification Method: Antigen affinity Purification
Size: 150ul , Concentration: 650 ug/ml by Nanodrop;	GeneID (NCBI): 146691	Recommended Dilutions: WB 1:5000-1:50000 IF/ICC 1:50-1:500
Source: Rabbit	UNIPROT ID: Q6ZVM7	
Isotype: IgG	Full Name: target of myb1-like 2 (chicken)	
Immunogen Catalog Number: AG37612	Calculated MW: 56 kDa 507aa	
	Observed MW: 60 kDa	

Applications

Tested Applications: WB, IF/ICC, ELISA	Positive Controls:
Species Specificity: human, mouse, rat	WB : A431 cells, A-253 cells, BxPC-3 cells, HaCaT cells, LNCaP cells, U-251 cells, NIH/3T3 cells, rat brain tissue, mouse brain tissue
	IF/ICC : HeLa cells,

Background Information

Target of Myb-like protein 2 (TOM1L2) acts as a MYO6/Myosin VI adapter protein that targets myosin VI to endocytic structures (PMID: 23023224). It may play a role in recruiting clathrin to endosomes and regulating growth factor-induced mitogenic signaling (PMID: 16412388; 16479011). TOM1L2 also regulates membrane trafficking that is linked to immunity and cell proliferation (PMID: 20604899).

Storage

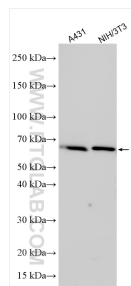
Storage:
Store at -20°C. Stable for one year after shipment.
Storage Buffer:
PBS with 0.02% sodium azide and 50% glycerol pH 7.3.
Aliquoting is unnecessary for -20°C storage

*** 20ul sizes contain 0.1% BSA

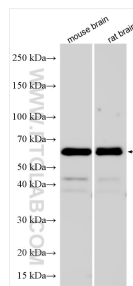
For technical support and original validation data for this product please contact:
T: 1 (888) 4PTGLAB (1-888-478-4522) (toll free in USA), or 1(312) 455-8498 (outside USA)
E: proteintech@ptglab.com
W: ptglab.com

This product is exclusively available under Proteintech Group brand and is not available to purchase from any other manufacturer.

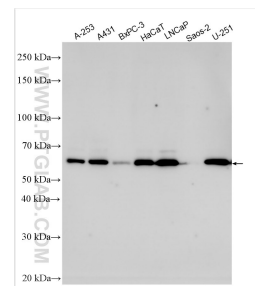
Selected Validation Data



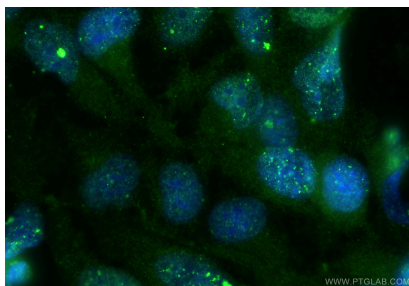
Various lysates were subjected to SDS PAGE followed by western blot with 32179-1-AP (TOM1L2 antibody) at dilution of 1:15000 incubated at room temperature for 1.5 hours.



mouse brain tissue were subjected to SDS PAGE followed by western blot with 32179-1-AP (TOM1L2 antibody) at dilution of 1:15000 incubated at room temperature for 1.5 hours.



Various lysates were subjected to SDS PAGE followed by western blot with 32179-1-AP (TOM1L2 antibody) at dilution of 1:10000 incubated at room temperature for 1.5 hours.



Immunofluorescent analysis of (-20°C Ethanol) fixed HeLa cells using TOM1L2 antibody (32179-1-AP) at dilution of 1:200 and Multi-rAb CoraLite® Plus 488-Goat Anti-Rabbit Recombinant Secondary Antibody (H+L) (RGAR002).