

For Research Use Only

TOM1L2 Polyclonal antibody, PBS Only

Catalog Number:32179-1-PBS



Basic Information

Catalog Number: 32179-1-PBS	GenBank Accession Number: NM_001082968.1	Purification Method: Antigen affinity Purification
Size: 100ug , Concentration: 1 mg/ml by Nanodrop;	GeneID (NCBI): 146691	
Source: Rabbit	UNIPROT ID: Q6ZVM7	
Isotype: IgG	Full Name: target of myb1-like 2 (chicken)	
Immunogen Catalog Number: AG37612	Calculated MW: 56 kDa 507aa	
	Observed MW: 60 kDa	

Applications

Tested Applications:
WB, IHC, IF/ICC, Indirect ELISA

Species Specificity:
human, mouse, rat

Background Information

Target of Myb-like protein 2 (TOM1L2) acts as a MYO6/Myosin VI adapter protein that targets myosin VI to endocytic structures (PMID: 23023224). It may play a role in recruiting clathrin to endosomes and regulating growth factor-induced mitogenic signaling (PMID: 16412388; 16479011). TOM1L2 also regulates membrane trafficking that is linked to immunity and cell proliferation (PMID: 20604899).

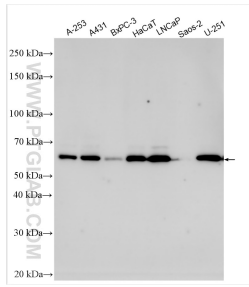
Storage

Storage:
Store at -80°C.
Storage Buffer:
PBS only, pH7.3

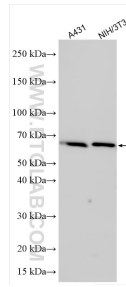
For technical support and original validation data for this product please contact:
T: 1 (888) 4PTGLAB (1-888-478-4522) (toll free in USA), or 1(312) 455-8498 (outside USA)
E: proteintech@ptglab.com
W: ptglab.com

This product is exclusively available under Proteintech Group brand and is not available to purchase from any other manufacturer.

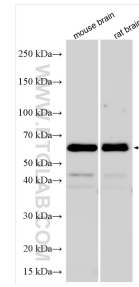
Selected Validation Data



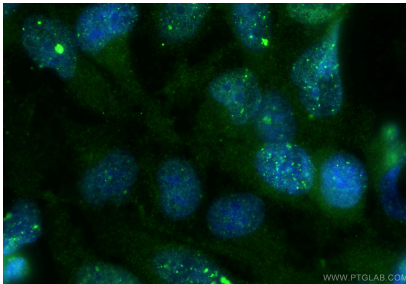
Various lysates were subjected to SDS PAGE followed by western blot with 32179-1-AP (TOM1L2 antibody) at dilution of 1:10000 incubated at room temperature for 1.5 hours. This data was developed using the same antibody clone with 32179-1-PBS in a different storage buffer formulation.



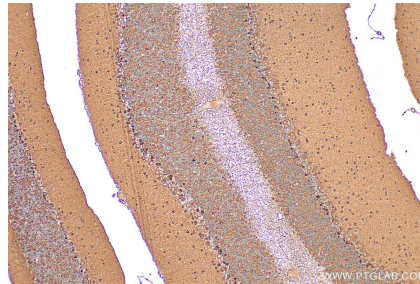
Various lysates were subjected to SDS PAGE followed by western blot with 32179-1-AP (TOM1L2 antibody) at dilution of 1:15000 incubated at room temperature for 1.5 hours. This data was developed using the same antibody clone with 32179-1-PBS in a different storage buffer formulation.



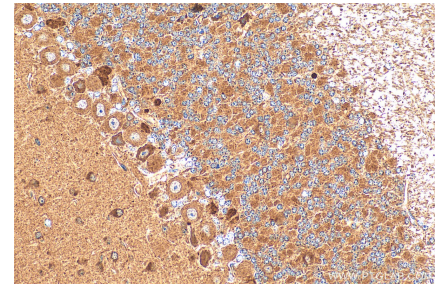
mouse brain tissue were subjected to SDS PAGE followed by western blot with 32179-1-AP (TOM1L2 antibody) at dilution of 1:15000 incubated at room temperature for 1.5 hours. This data was developed using the same antibody clone with 32179-1-PBS in a different storage buffer formulation.



Immunofluorescent analysis of (-20°C Ethanol) fixed HeLa cells using TOM1L2 antibody (32179-1-AP) at dilution of 1:200 and Multi-rAb CoraLite® Plus 488-Goat Anti-Rabbit Recombinant Secondary Antibody (H+L) (RGAR002). This data was developed using the same antibody clone with 32179-1-PBS in a different storage buffer formulation.



Immunohistochemical analysis of paraffin-embedded mouse cerebellum tissue slide using 32179-1-AP (TOM1L2 antibody) at dilution of 1:600 (under 10x lens). Heat mediated antigen retrieval with Tris-EDTA buffer (pH 9.0). This data was developed using the same antibody clone with 32179-1-PBS in a different storage buffer formulation.



Immunohistochemical analysis of paraffin-embedded mouse cerebellum tissue slide using 32179-1-AP (TOM1L2 antibody) at dilution of 1:600 (under 40x lens). Heat mediated antigen retrieval with Tris-EDTA buffer (pH 9.0). This data was developed using the same antibody clone with 32179-1-PBS in a different storage buffer formulation.