

For Research Use Only

# CD22 Polyclonal antibody

Catalog Number: 32183-1-AP



## Basic Information

**Catalog Number:**

32183-1-AP

**Size:**

150ul , Concentration: 700 ug/ml by Nanodrop;

**Source:**

Rabbit

**Isotype:**

IgG

**GenBank Accession Number:**

NM\_001043317.2

**GeneID (NCBI):**

12483

**UNIPROT ID:**

P35329-1

**Full Name:**

CD22 antigen

**Calculated MW:**

97kDa

**Observed MW:**

120-150 kDa

**Purification Method:**

Antigen affinity Purification

**Recommended Dilutions:**

WB 1:500-1:2000

IF-P 1:50-1:500

## Applications

**Tested Applications:**

WB, IF-P, FC, ELISA

**Species Specificity:**

mouse

**Positive Controls:**

WB : mouse spleen tissue,

IF-P : mouse spleen tissue,

## Background Information

CD22, also known as Siglec-2 (sialic acid binding Ig-like lectin 2) or BL-CAM (B-lymphocyte cell adhesion molecule), is a 130-140 kDa, B-cell restricted, type I transmembrane glycoprotein belonging to the immunoglobulin gene superfamily. The expression of CD22 is developmentally regulated. It is expressed at low levels in the cytoplasm of pro-B and pre-B cells and present on the cell surface only at mature stages of B-cell differentiation. Cell surface expression is lost during terminal differentiation into plasma cell and after B-cell activation. CD22 is an inhibitory receptor for B-cell receptor (BCR) signalling, preferentially binds to alpha-2,6-linked sialic acid and mediates B-cell B-cell interactions. It plays a crucial role in activation and differentiation of the B-cell.

## Storage

**Storage:**

Store at -20°C. Stable for one year after shipment.

**Storage Buffer:**

PBS with 0.02% sodium azide and 50% glycerol pH 7.3.

Aliquoting is unnecessary for -20°C storage

\*\*\* 20ul sizes contain 0.1% BSA

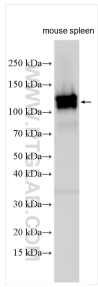
For technical support and original validation data for this product please contact:

T: 1 (888) 4PTGLAB (1-888-478-4522) (toll free in USA), or 1(312) 455-8498 (outside USA)

E: [proteintech@ptglab.com](mailto:proteintech@ptglab.com)  
W: [ptglab.com](http://ptglab.com)

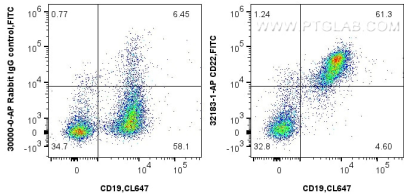
This product is exclusively available under Proteintech Group brand and is not available to purchase from any other manufacturer.

Selected Validation Data



Various lysates were subjected to SDS PAGE followed by western blot with 32183-1-AP (CD22 antibody) at dilution of 1:1000 incubated at room temperature for 1.5 hours.

Immunofluorescent analysis of (4% PFA) fixed paraffin-embedded mouse spleen tissue using CD22 antibody (32183-1-AP) at dilution of 1:200 and Coralite®594-Conjugated Goat Anti-Rabbit IgG(H+L) (SA00013-4). Heat mediated antigen retrieval with Tris-EDTA buffer (pH 9.0).



1x10<sup>6</sup> mouse splenocytes were surface stained with 0.25 ug CD22 Polyclonal antibody (32183-1-AP) and Coralite®488-Conjugated Goat Anti-Rabbit IgG(H+L) (SA00013-2)(red), or 0.25 ug (CL647-65290), or 0.25 ug Rabbit IgG control Rabbit PolyAb (30000-O-AP) (blue). Cells were not fixed.