

For Research Use Only

# PPPDE2 Polyclonal antibody

Catalog Number: 32194-1-AP



## Basic Information

<b>Catalog Number:</b> 32194-1-AP	<b>GenBank Accession Number:</b> BC112179	<b>Purification Method:</b> Antigen affinity Purification
<b>Size:</b> 150ul , Concentration: 400 ug/ml by Nanodrop;	<b>GeneID (NCBI):</b> 27351	<b>Recommended Dilutions:</b> WB 1:500-1:2000
<b>Source:</b> Rabbit	<b>UNIPROT ID:</b> Q6ICB0	
<b>Isotype:</b> IgG	<b>Full Name:</b> PPPDE peptidase domain containing 2	
<b>Immunogen Catalog Number:</b> AG37655	<b>Calculated MW:</b> 168 aa, 18 kDa	
	<b>Observed MW:</b> 17 kDa	

## Applications

<b>Tested Applications:</b> WB, ELISA	<b>Positive Controls:</b> WB : U2OS cells, HeLa cells, MDA-MB-453 cells
<b>Species Specificity:</b> human	

## Background Information

PPPDE2 belongs to N1pC/P60 superfamily of papain-like enzymes, which comprise an extremely diverse group of proteins originating from archaea, bacteria, bacteriophages, viruses, and eukaryotes with predicted protease, amidase, transglutaminases, or acyltransferase activity but often uncharacterized function (PMID: 12620121). PPPDE2 exhibits palmitoyl protein thioesterase (S-depalmitoylation) activity towards synthetic substrates 4-methylumbelliferyl-6-S-palmitoyl-beta-D-glucopyranoside and S-depalmitoylation probe 5 (DPP-5) (PMID:35427157).

## Storage

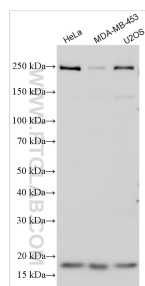
**Storage:**  
Store at -20°C. Stable for one year after shipment.  
**Storage Buffer:**  
PBS with 0.02% sodium azide and 50% glycerol pH 7.3.  
Aliquoting is unnecessary for -20°C storage

\*\*\* 20ul sizes contain 0.1% BSA

For technical support and original validation data for this product please contact:  
T: 1 (888) 4PTGLAB (1-888-478-4522) (toll free in USA), or 1(312) 455-8498 (outside USA)  
E: [proteintech@ptglab.com](mailto:proteintech@ptglab.com)  
W: [ptglab.com](http://ptglab.com)

This product is exclusively available under Proteintech Group brand and is not available to purchase from any other manufacturer.

## Selected Validation Data



Various lysates were subjected to SDS PAGE followed by western blot with 32194-1-AP (PPPDE2 antibody) at dilution of 1:1000 incubated at room temperature for 1.5 hours.