

For Research Use Only

SLPI Polyclonal antibody, PBS Only

Catalog Number: 32205-1-PBS



Basic Information

Catalog Number: 32205-1-PBS	GenBank Accession Number: BC020708	Purification Method: Antigen affinity Purification
Size: 100ug , Concentration: 1 mg/ml by Nanodrop;	GeneID (NCBI): 6590	
Source: Rabbit	UNIPROT ID: P03973	
Isotype: IgG	Full Name: secretory leukocyte peptidase inhibitor	
Immunogen Catalog Number: AG36523	Calculated MW: 14 kDa	
	Observed MW: 14 kDa	

Applications

Tested Applications:
WB, IF/ICC, IP, Indirect ELISA

Species Specificity:
human

Background Information

Secretory leukocyte protease inhibitor (SLPI) is also named as Antileukoproteinase (ALP), BLPI, HUSI-1, WAP4, WFDC4 and mucus proteinase inhibitor (MPI). The SLPI is a multifunctional protein involved in the modulation of immunological response and the inhibition of protease activities. SLPI acts as an inhibitor of proteases, exerts antibacterial properties, and suppresses the transcription of proinflammatory genes through the nuclear factor-kappa B (NF- κ B) pathway (PMID: 37356220). SLPI is as a serine protease inhibitor and also as a critical mediator that is involved in the PTH-mediated shift to the osteoblastic phase (PMID: 17474882). SLPi induction in osteoblasts enhances its differentiation, and increases osteoblast-osteoclast contact, thereby suppressing osteoclastic function (PMID: 17474882). SLPI is an evolutionarily conserved, pleiotropic protein expressed at mucosal surfaces, mainly by epithelial cells (PMID: 33602652). SLPI maintains homeostasis at barrier tissues by preventing tissue destruction and regulating the threshold of inflammatory immune responses, while protecting the host from infection. However, as recent studies demonstrate that overexpression of SLPI increases the metastatic potential of epithelial tumors (PMID: 33602652). The role of this protein as a regulatory agent has been implicated in various types of cancer (PMID: 37356220).

Storage

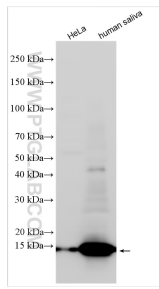
Storage:
Store at -80°C.

Storage Buffer:
PBS only, pH7.3

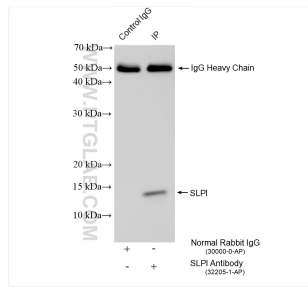
For technical support and original validation data for this product please contact:
T: 1 (888) 4PTGLAB (1-888-478-4522) (toll free in USA), or 1(312) 455-8498 (outside USA) E: proteintech@ptglab.com
W: ptglab.com

This product is exclusively available under Proteintech Group brand and is not available to purchase from any other manufacturer.

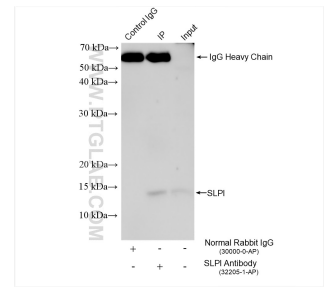
Selected Validation Data



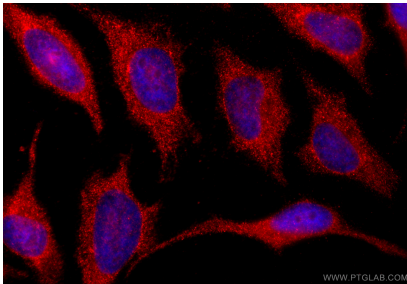
Various lysates were subjected to SDS PAGE followed by western blot with 32205-1-AP (SLPI antibody) at dilution of 1:600 incubated at room temperature for 1.5 hours. This data was developed using the same antibody clone with 32205-1-PBS in a different storage buffer formulation.



IP result of anti-SLPI (IP:32205-1-AP, 4ug; Detection:32205-1-AP 1:800) with HeLa cells lysate 1200 ug. This data was developed using the same antibody clone with 32205-1-PBS in a different storage buffer formulation.



IP result of anti-SLPI (IP:32205-1-AP, 4ug; Detection:32205-1-AP 1:800) with HeLa cells lysate 1200 ug. This data was developed using the same antibody clone with 32205-1-PBS in a different storage buffer formulation.



Immunofluorescent analysis of (-20°C Ethanol) fixed HeLa cells using SLPI antibody (32205-1-AP) at dilution of 1:400 and CoraLite®594-Conjugated Goat Anti-Rabbit IgG(H+L) (SA00013-4). This data was developed using the same antibody clone with 32205-1-PBS in a different storage buffer formulation.