

For Research Use Only

C1QL2 Polyclonal antibody

Catalog Number: 32206-1-AP



Basic Information

Catalog Number: 32206-1-AP	GenBank Accession Number: NM_182528	Purification Method: Antigen affinity Purification
Size: 150ul , Concentration: 350 ug/ml by Nanodrop;	GeneID (NCBI): 165257	Recommended Dilutions: WB: 1:500-1:1000 IHC: 1:50-1:500
Source: Rabbit	UNIPROT ID: Q7Z5L3	
Isotype: IgG	Full Name: complement component 1, q subcomponent-like 2	
Immunogen Catalog Number: AG37614	Calculated MW: 29 kDa	
	Observed MW: 35 kDa	

Applications

Tested Applications: WB, IHC, ELISA	Positive Controls:
Species Specificity: human, mouse, rat	WB : mouse brain tissue, rat brain tissue
Note-IHC: suggested antigen retrieval with TE buffer pH 9.0; (*) Alternatively, antigen retrieval may be performed with citrate buffer pH 6.0	IHC : rat brain tissue, mouse brain tissue

Background Information

Complement C1q-like protein 2 (C1QL2, also known as CTRP10) is a member of the C1q-like protein family. It is a secreted protein that plays a role in synaptic organization and function. C1QL2 is involved in the formation and maintenance of synapses, particularly in the central nervous system (CNS) (PMID: 20646056). It interacts with specific neurexin-3 isoforms to recruit synaptic vesicles and modulate synaptic transmission. Additionally, C1QL2 has been implicated in the regulation of hippocampal mossy fiber-CA3 synapse function, suggesting its role in synaptic plasticity and memory formation (PMID: 28219683).

Storage

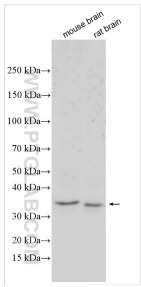
Storage:
Store at -20°C. Stable for one year after shipment.
Storage Buffer:
PBS with 0.02% sodium azide and 50% glycerol, pH7.3
Aliquoting is unnecessary for -20°C storage

*** 20ul sizes contain 0.1% BSA

For technical support and original validation data for this product please contact:
T: 1 (888) 4PTGLAB (1-888-478-4522) (toll free in USA), or 1(312) 455-8498 (outside USA)
E: proteintech@ptglab.com
W: ptglab.com

This product is exclusively available under Proteintech Group brand and is not available to purchase from any other manufacturer.

Selected Validation Data



Various lysates were subjected to SDS PAGE followed by western blot with 32206-1-AP (C1QL2 antibody) at dilution of 1:500 incubated at room temperature for 1.5 hours.

Immunohistochemical analysis of paraffin-embedded rat brain tissue slide using 32206-1-AP (C1QL2 antibody) at dilution of 1:200 (under 40x lens). Heat mediated antigen retrieval with Tris-EDTA buffer (pH 9.0).

Immunohistochemical analysis of paraffin-embedded mouse brain tissue slide using 32206-1-AP (C1QL2 antibody) at dilution of 1:200 (under 10x lens). Heat mediated antigen retrieval with Tris-EDTA buffer (pH 9.0).