

For Research Use Only

GCC2 Polyclonal antibody, PBS Only

Catalog Number: 32217-1-PBS



Basic Information

Catalog Number:

32217-1-PBS

Size:

100ug, Concentration: 1 mg/ml by Nanodrop;

Source:

Rabbit

Isotype:

IgG

Immunogen Catalog Number:

AG17535

GenBank Accession Number:

BC146789

GeneID (NCBI):

9648

UNIPROT ID:

Q8IWI2

Full Name:

GRIP and coiled-coil domain containing 2

Calculated MW:

1583 aa, 185 kDa

Observed MW:

200 kDa

Purification Method:

Antigen affinity Purification

Applications

Tested Applications:

WB, IHC, Indirect ELISA

Species Specificity:

human

Background Information

The GCC2 protein, fully named GRIP and Coiled-Coil Domain-Containing Protein 2, is a key adaptor protein in the intracellular Golgi-endosomal membrane transport system. It specifically anchors to the Golgi membrane via its GRIP domain and is primarily responsible for mediating retrograde vesicular transport from endosomes to the Golgi apparatus, participating in the recycling and sorting of various cargo proteins, such as the mannose-6-phosphate receptor. Recent studies have revealed that GCC2 regulates the subcellular localization of the GATOR complex, thereby acting as an important upstream regulator of the mTORC1 signaling pathway, which influences cell growth, metabolism, and autophagy. Dysfunction of GCC2 is closely associated with neurodevelopmental disorders and tumorigenesis, underscoring its significance in cell biology and disease research.

Storage

Storage:

Store at -80°C.

Storage Buffer:

PBS only, pH7.3

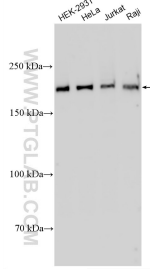
For technical support and original validation data for this product please contact:

T: 1 (888) 4PTGLAB (1-888-478-4522) (toll free in USA), or 1(312) 455-8498 (outside USA)

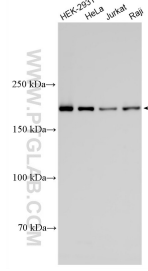
E: proteintech@ptglab.com
W: ptglab.com

This product is exclusively available under Proteintech Group brand and is not available to purchase from any other manufacturer.

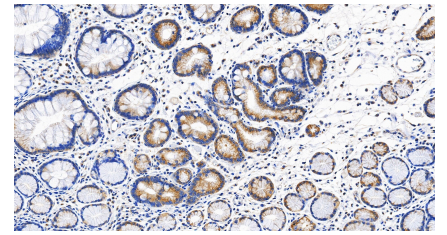
Selected Validation Data



Various lysates were subjected to SDS PAGE followed by western blot with 32217-1-AP (GCC2 antibody) at dilution of 1:10000 incubated at room temperature for 1.5 hours. This data was developed using the same antibody clone with 32217-1-PBS in a different storage buffer formulation.



Various lysates were subjected to SDS PAGE followed by western blot with 32217-1-AP (GCC2 antibody) at dilution of 1:20000 incubated at room temperature for 1.5 hours. This data was developed using the same antibody clone with 32217-1-PBS in a different storage buffer formulation.



Immunohistochemical analysis of paraffin-embedded human stomach cancer tissue slide using 32217-1-AP (GCC2 antibody) at dilution of 1:4000 (under 20x lens). Heat mediated antigen retrieval with Tris-EDTA buffer (pH 9.0). This data was developed using the same antibody clone with 32217-1-PBS in a different storage buffer formulation.