

For Research Use Only

# SEC24B Polyclonal antibody

Catalog Number:32225-1-AP



## Basic Information

<b>Catalog Number:</b> 32225-1-AP	<b>GenBank Accession Number:</b> NM_006323.4	<b>Purification Method:</b> Antigen affinity Purification
<b>Size:</b> 150ul , Concentration: 350 ug/ml by Nanodrop;	<b>GeneID (NCBI):</b> 10427	<b>Recommended Dilutions:</b> WB 1:2000-1:10000
<b>Source:</b> Rabbit	<b>UNIPROT ID:</b> O95487	
<b>Isotype:</b> IgG	<b>Full Name:</b> SEC24 family, member B (S. cerevisiae)	
<b>Immunogen Catalog Number:</b> AG36544	<b>Calculated MW:</b> 137kDa 1268aa	
	<b>Observed MW:</b> 140 kDa	

## Applications

<b>Tested Applications:</b> WB, ELISA	<b>Positive Controls:</b> WB : HEK-293 cells, HeLa cells, HepG2 cells, L02 cells
<b>Species Specificity:</b> human	

## Background Information

SEC24B is a gene that encodes a protein belonging to the SEC23/SEC24 family, which is involved in vesicle trafficking. The protein is thought to be a cargo-binding component of the COPII vesicle and is involved in the transport of secretory proteins from the endoplasmic reticulum to the Golgi apparatus.

## Storage

**Storage:**  
Store at -20°C. Stable for one year after shipment.  
**Storage Buffer:**  
PBS with 0.02% sodium azide and 50% glycerol pH 7.3.  
Aliquoting is unnecessary for -20°C storage

\*\*\* 20ul sizes contain 0.1% BSA

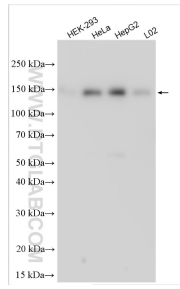
For technical support and original validation data for this product please contact:

T: 1 (888) 4PTGLAB (1-888-478-4522) (toll free in USA), or 1(312) 455-8498 (outside USA)

E: [proteintech@ptglab.com](mailto:proteintech@ptglab.com)  
W: [ptglab.com](http://ptglab.com)

This product is exclusively available under Proteintech Group brand and is not available to purchase from any other manufacturer.

## Selected Validation Data



Various lysates were subjected to SDS PAGE followed by western blot with 32225-1-AP (SEC24B antibody) at dilution of 1:5000 incubated at room temperature for 1.5 hours.