

For Research Use Only

SEC24B Polyclonal antibody, PBS Only

Catalog Number: 32225-1-PBS



Basic Information

Catalog Number:

32225-1-PBS

Size:

100ug, Concentration: 1 mg/ml by Nanodrop;

Source:

Rabbit

Isotype:

IgG

Immunogen Catalog Number:

AG36544

GenBank Accession Number:

NM_006323.4

GeneID (NCBI):

10427

UNIPROT ID:

O95487

Full Name:

SEC24 family, member B (S. cerevisiae)

Calculated MW:

137kDa 1268aa

Observed MW:

140 kDa

Purification Method:

Antigen affinity Purification

Applications

Tested Applications:

WB, Indirect ELISA

Species Specificity:

human

Background Information

SEC24B is a gene that encodes a protein belonging to the SEC23/SEC24 family, which is involved in vesicle trafficking. The protein is thought to be a cargo-binding component of the COPII vesicle and is involved in the transport of secretory proteins from the endoplasmic reticulum to the Golgi apparatus.

Storage

Storage:

Store at -80°C.

Storage Buffer:

PBS Only

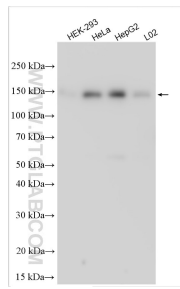
For technical support and original validation data for this product please contact:

T: 1 (888) 4PTGLAB (1-888-478-4522) (toll free in USA), or 1(312) 455-8498 (outside USA)

E: proteintech@ptglab.com
W: ptglab.com

This product is exclusively available under Proteintech Group brand and is not available to purchase from any other manufacturer.

Selected Validation Data



Various lysates were subjected to SDS PAGE followed by western blot with 32225-1-AP (SEC24B antibody) at dilution of 1:5000 incubated at room temperature for 1.5 hours. This data was developed using the same antibody clone with 32225-1-PBS in a different storage buffer formulation.