

For Research Use Only

ENPP7 Polyclonal antibody, PBS Only

Catalog Number:32226-1-PBS



Basic Information

Catalog Number:

32226-1-PBS

Size:

100ug, Concentration: 1 mg/ml by Nanodrop;

Source:

Rabbit

Isotype:

IgG

Immunogen Catalog Number:

AG36493

GenBank Accession Number:

NM_178543.4

GeneID (NCBI):

339221

UNIPROT ID:

Q6UWV6

Full Name:

ectonucleotide pyrophosphatase/phosphodiesterase 7

Calculated MW:

51 kDa 458aa

Observed MW:

51 kDa

Purification Method:

Antigen affinity Purification

Applications

Tested Applications:

WB, Indirect ELISA

Species Specificity:

human, mouse

Background Information

Ectonucleotide pyrophosphatase/phosphodiesterase family member 7 (ENPP7) stands out as an alkaline sphingomyelinase that functions in the intestine to cleave sphingomyelin (SM) into ceramide and phosphocholine in a phospholipase C (PLC) -like manner and has been associated with hepatobiliary diseases. Reduced ENPP7 activity is detected in colorectal cancer and in familial adenomatous polyposis, suggesting a link between decreased SM metabolism and colon tumorigenesis (PMID: 22177013; 28292932).

Storage

Storage:

Store at -80°C.

Storage Buffer:

PBS only, pH7.3

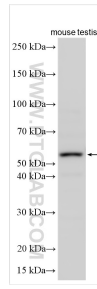
For technical support and original validation data for this product please contact:

T: 1 (888) 4PTGLAB (1-888-478-4522) (toll free in USA), or 1(312) 455-8498 (outside USA)

E: proteintech@ptglab.com
W: ptglab.com

This product is exclusively available under Proteintech Group brand and is not available to purchase from any other manufacturer.

Selected Validation Data



Mouse testis tissue lysate was subjected to SDS PAGE followed by western blot with 32226-1-AP (ENPP7 antibody) at dilution of 1:1000 incubated at room temperature for 1.5 hours. This data was developed using the same antibody clone with 32226-1-PBS in a different storage buffer formulation.