

For Research Use Only

# CRYGD Polyclonal antibody

Catalog Number:32233-1-AP



## Basic Information

<b>Catalog Number:</b> 32233-1-AP	<b>GenBank Accession Number:</b> NM_006891.3	<b>Purification Method:</b> Antigen affinity Purification
<b>Size:</b> 150ul , Concentration: 350 µg/ml by Nanodrop;	<b>GeneID (NCBI):</b> 1421	<b>Recommended Dilutions:</b> WB: 1:5000-1:50000
<b>Source:</b> Rabbit	<b>UNIPROT ID:</b> P07320	
<b>Isotype:</b> IgG	<b>Full Name:</b> crystallin, gamma D	
<b>Immunogen Catalog Number:</b> AG37473	<b>Calculated MW:</b> 21kDa 174aa	
	<b>Observed MW:</b> 18 kDa	

## Applications

<b>Tested Applications:</b> WB, ELISA	<b>Positive Controls:</b> WB : mouse eye tissue, rat eye tissue
<b>Species Specificity:</b> human, mouse, rat	

## Background Information

CRYGD (Crystallin Gamma D) is a structural protein predominantly expressed in the lens of the eye. It plays a critical role in maintaining lens transparency and refractive index. Mutations in the CRYGD gene are associated with inherited forms of congenital cataracts, making it a genetic target for studying lens development and cataract pathogenesis. It is not a conventional therapeutic drug target but serves as a key marker in ocular disease research.

## Storage

**Storage:**  
Store at -20°C. Stable for one year after shipment.  
**Storage Buffer:**  
PBS with 0.02% sodium azide and 50% glycerol, pH7.3  
Aliquoting is unnecessary for -20°C storage

\*\*\* 20ul sizes contain 0.1% BSA

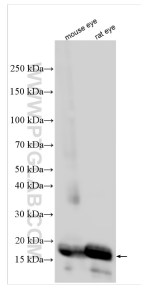
For technical support and original validation data for this product please contact:

T: 1 (888) 4PTGLAB (1-888-478-4522) (toll free in USA), or 1(312) 455-8498 (outside USA)

E: [proteintech@ptglab.com](mailto:proteintech@ptglab.com)  
W: [ptglab.com](http://ptglab.com)

This product is exclusively available under Proteintech Group brand and is not available to purchase from any other manufacturer.

## Selected Validation Data



Various lysates were subjected to SDS PAGE followed by western blot with 32233-1-AP (CRYGD antibody) at dilution of 1:40000 incubated at room temperature for 1.5 hours.