

For Research Use Only

# CRYGD Polyclonal antibody, PBS Only

Catalog Number:32233-1-PBS



## Basic Information

**Catalog Number:**

32233-1-PBS

**Size:**

100ug , Concentration: 1 mg/ml by Nanodrop;

**Source:**

Rabbit

**Isotype:**

IgG

**Immunogen Catalog Number:**

AG37473

**GenBank Accession Number:**

NM\_006891.3

**GeneID (NCBI):**

1421

**UNIPROT ID:**

P07320

**Full Name:**

crystallin, gamma D

**Calculated MW:**

21kDa 174aa

**Observed MW:**

18 kDa

**Purification Method:**

Antigen affinity Purification

## Applications

**Tested Applications:**

WB, Indirect ELISA

**Species Specificity:**

human, mouse, rat

## Background Information

CRYGD (Crystallin Gamma D) is a structural protein predominantly expressed in the lens of the eye. It plays a critical role in maintaining lens transparency and refractive index. Mutations in the CRYGD gene are associated with inherited forms of congenital cataracts, making it a genetic target for studying lens development and cataract pathogenesis. It is not a conventional therapeutic drug target but serves as a key marker in ocular disease research.

## Storage

**Storage:**

Store at -80°C.

**Storage Buffer:**

PBS only, pH7.3

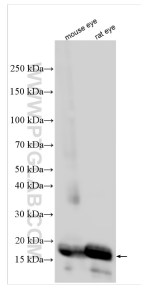
For technical support and original validation data for this product please contact:

T: 1 (888) 4PTGLAB (1-888-478-4522) (toll free in USA), or 1(312) 455-8498 (outside USA)

E: [proteintech@ptglab.com](mailto:proteintech@ptglab.com)  
W: [ptglab.com](http://ptglab.com)

**This product is exclusively available under Proteintech Group brand and is not available to purchase from any other manufacturer.**

## Selected Validation Data



Various lysates were subjected to SDS PAGE followed by western blot with 32233-1-AP (CRYGD antibody) at dilution of 1:40000 incubated at room temperature for 1.5 hours. This data was developed using the same antibody clone with 32233-1-PBS in a different storage buffer formulation.