

For Research Use Only

NACA Polyclonal antibody

Catalog Number: 32235-1-AP



Basic Information

Catalog Number:

32235-1-AP

Size:

150ul, Concentration: 200 ug/ml by Nanodrop;

Source:

Rabbit

Isotype:

IgG

Immunogen Catalog Number:

AG37704

GenBank Accession Number:

BC106041

GeneID (NCBI):

4666

UNIPROT ID:

Q13765

Full Name:

nascent polypeptide-associated complex alpha subunit

Calculated MW:

215 aa, 23 kDa

Observed MW:

35 kDa

Purification Method:

Antigen affinity Purification

Recommended Dilutions:

WB 1:1000-1:6000

IHC 1:50-1:500

Applications

Tested Applications:

WB, IHC, ELISA

Species Specificity:

human, mouse, rat

Note-IHC: suggested antigen retrieval with TE buffer pH 9.0; (*) Alternatively, antigen retrieval may be performed with citrate buffer pH 6.0

Positive Controls:

WB : HeLa cells, U-87 MG cells, mouse brain tissue, rat brain tissue

IHC : mouse kidney tissue,

Background Information

NACA (NAC-alpha), or Nascent polypeptide-associated complex subunit alpha, is a component of the nascent polypeptide-associated complex (NAC). NACA is a key subunit of the NAC complex that assists in the proper folding of newly synthesized proteins and prevents the formation of harmful protein aggregates, playing a vital role in cellular protein quality control and stress response mechanisms. The calculated MW of NACA is 23 kDa, and the observed MW is 35 kDa, which is due to phosphorylation modification (PMID: 30948508, 36107769).

Storage

Storage:

Store at -20°C. Stable for one year after shipment.

Storage Buffer:

PBS with 0.02% sodium azide and 50% glycerol

Aliquoting is unnecessary for -20°C storage

***** 20ul sizes contain 0.1% BSA**

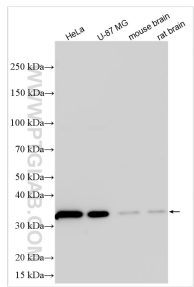
For technical support and original validation data for this product please contact:

T: 1 (888) 4PTGLAB (1-888-478-4522) (toll free in USA), or 1(312) 455-8498 (outside USA)

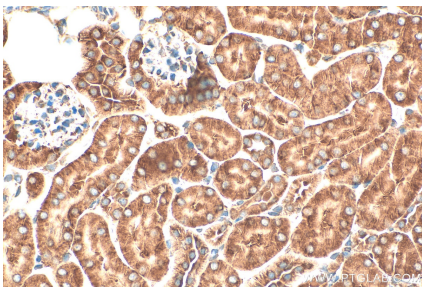
E: proteintech@ptglab.com
W: ptglab.com

This product is exclusively available under Proteintech Group brand and is not available to purchase from any other manufacturer.

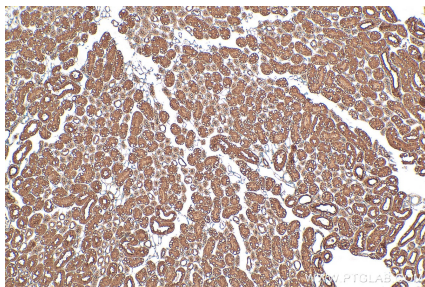
Selected Validation Data



HeLa cells were subjected to SDS PAGE followed by western blot with 32235-1-AP (NACA antibody) at dilution of 1:3000 incubated at room temperature for 1.5 hours.



Immunohistochemical analysis of paraffin-embedded mouse kidney tissue slide using 32235-1-AP (NACA antibody) at dilution of 1:200 (under 40x lens). Heat mediated antigen retrieval with Tris-EDTA buffer (pH 9.0).



Immunohistochemical analysis of paraffin-embedded mouse kidney tissue slide using 32235-1-AP (NACA antibody) at dilution of 1:200 (under 10x lens). Heat mediated antigen retrieval with Tris-EDTA buffer (pH 9.0).