

For Research Use Only

# NACA Polyclonal antibody, PBS Only

Catalog Number: 32235-1-PBS



## Basic Information

**Catalog Number:**

32235-1-PBS

**Size:**

100ug, Concentration: 1 mg/ml by Nanodrop;

**Source:**

Rabbit

**Isotype:**

IgG

**Immunogen Catalog Number:**

AG37704

**GenBank Accession Number:**

BC106041

**GeneID (NCBI):**

4666

**UNIPROT ID:**

Q13765

**Full Name:**

nascent polypeptide-associated complex alpha subunit

**Calculated MW:**

215 aa, 23 kDa

**Observed MW:**

35 kDa

**Purification Method:**

Antigen affinity Purification

## Applications

**Tested Applications:**

WB, IHC, Indirect ELISA

**Species Specificity:**

human, mouse, rat

## Background Information

NACA (NAC-alpha), or Nascent polypeptide-associated complex subunit alpha, is a component of the nascent polypeptide-associated complex (NAC). NACA is a key subunit of the NAC complex that assists in the proper folding of newly synthesized proteins and prevents the formation of harmful protein aggregates, playing a vital role in cellular protein quality control and stress response mechanisms. The calculated MW of NACA is 23 kDa, and the observed MW is 35 kDa, which is due to phosphorylation modification (PMID: 30948508, 36107769).

## Storage

**Storage:**

Store at -80°C.

**Storage Buffer:**

PBS only

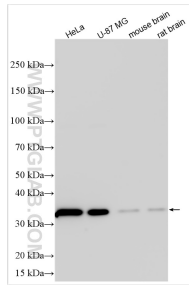
For technical support and original validation data for this product please contact:

T: 1 (888) 4PTGLAB (1-888-478-4522) (toll free in USA), or 1(312) 455-8498 (outside USA)

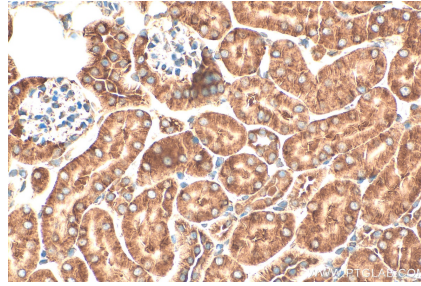
E: [proteintech@ptglab.com](mailto:proteintech@ptglab.com)  
W: [ptglab.com](http://ptglab.com)

**This product is exclusively available under Proteintech Group brand and is not available to purchase from any other manufacturer.**

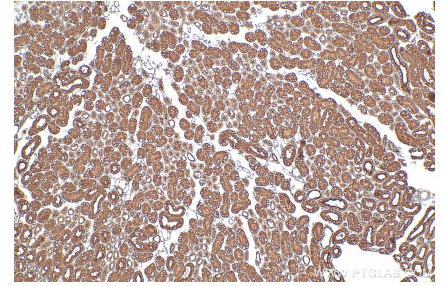
## Selected Validation Data



HeLa cells were subjected to SDS PAGE followed by western blot with 32235-1-AP (NACA antibody) at dilution of 1:3000 incubated at room temperature for 1.5 hours. This data was developed using the same antibody clone with 32235-1-PBS in a different storage buffer formulation.



Immunohistochemical analysis of paraffin-embedded mouse kidney tissue slide using 32235-1-AP (NACA antibody) at dilution of 1:200 (under 40x lens). Heat mediated antigen retrieval with Tris-EDTA buffer (pH 9.0). This data was developed using the same antibody clone with 32235-1-PBS in a different storage buffer formulation.



Immunohistochemical analysis of paraffin-embedded mouse kidney tissue slide using 32235-1-AP (NACA antibody) at dilution of 1:200 (under 10x lens). Heat mediated antigen retrieval with Tris-EDTA buffer (pH 9.0). This data was developed using the same antibody clone with 32235-1-PBS in a different storage buffer formulation.