

For Research Use Only

MEGF8 Polyclonal antibody

Catalog Number: 32300-1-AP



Basic Information

Catalog Number:

32300-1-AP

Size:

150ul , Concentration: 450 ug/ml by Nanodrop;

Source:

Rabbit

Isotype:

IgG

Immunogen Catalog Number:

AG36469

GenBank Accession Number:

NM_001271938.1

GeneID (NCBI):

1954

UNIPROT ID:

Q7Z7M0

Full Name:

multiple EGF-like-domains 8

Calculated MW:

303 kDa

Observed MW:

303 kDa

Purification Method:

Antigen affinity Purification

Recommended Dilutions:

WB 1:500-1:1000

Applications

Tested Applications:

WB, ELISA

Species Specificity:

human

Positive Controls:

WB : COLO 320 cells, HepG2 cells, U-251 cells, U2OS cells

Background Information

Multiple epidermal growth factor-like domains protein 8 (MEGF8, also known as C19orf49, EGFL4, and KIAA0817) is a multidomain transmembrane protein, which is known to interact with MGRN1, a protein that functions as an E3 ubiquitin ligase, and this interaction is involved in the regulation of Hedgehog signaling and heart development (PMID: 32966817). It is also involved in mediating Bone morphogenetic protein 4 (BMP4) signaling and guidance of developing trigeminal ganglion (TG) axons (PMID: 24052814). Immunoelectron microscopy showed that MEGF8 was present in the synapses and around the outer mitochondrial membrane, indicating its role in synaptic and mitochondrial functions (PMID: 38201267).

Storage

Storage:

Store at -20°C. Stable for one year after shipment.

Storage Buffer:

PBS with 0.02% sodium azide and 50% glycerol pH 7.3.

Aliquoting is unnecessary for -20°C storage

*** 20ul sizes contain 0.1% BSA

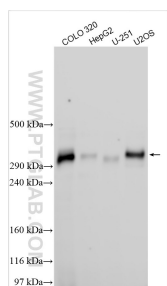
For technical support and original validation data for this product please contact:

T: 1 (888) 4PTGLAB (1-888-478-4522) (toll free in USA), or 1(312) 455-8498 (outside USA)

E: proteintech@ptglab.com
W: ptglab.com

This product is exclusively available under Proteintech Group brand and is not available to purchase from any other manufacturer.

Selected Validation Data



Various lysates were subjected to SDS PAGE followed by western blot with 32300-1-AP (MEGF8 antibody) at dilution of 1:600 incubated at room temperature for 1.5 hours.