

For Research Use Only

# MEGF8 Polyclonal antibody, PBS Only

Catalog Number:32300-1-PBS



## Basic Information

**Catalog Number:**

32300-1-PBS

**Size:**

100ug , Concentration: 1 mg/ml by Nanodrop;

**Source:**

Rabbit

**Isotype:**

IgG

**Immunogen Catalog Number:**

AG36469

**GenBank Accession Number:**

NM\_001271938.1

**GeneID (NCBI):**

1954

**UNIPROT ID:**

Q7Z7M0

**Full Name:**

multiple EGF-like-domains 8

**Calculated MW:**

303 kDa

**Observed MW:**

303 kDa

**Purification Method:**

Antigen affinity Purification

## Applications

**Tested Applications:**

WB, Indirect ELISA

**Species Specificity:**

human

## Background Information

Multiple epidermal growth factor-like domains protein 8 (MEGF8, also known as C19orf49, EGFL4, and KIAA0817) is a multidomain transmembrane protein, which is known to interact with MGRN1, a protein that functions as an E3 ubiquitin ligase, and this interaction is involved in the regulation of Hedgehog signaling and heart development (PMID: 32966817). It is also involved in mediating Bone morphogenetic protein 4 (BMP4) signaling and guidance of developing trigeminal ganglion (TG) axons (PMID: 24052814). Immunoelectron microscopy showed that MEGF8 was present in the synapses and around the outer mitochondrial membrane, indicating its role in synaptic and mitochondrial functions (PMID: 38201267).

## Storage

**Storage:**

Store at -80°C.

**Storage Buffer:**

PBS only, pH7.3

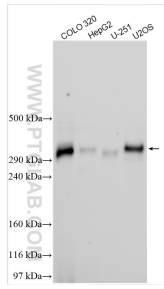
For technical support and original validation data for this product please contact:

T: 1 (888) 4PTGLAB (1-888-478-4522) (toll free in USA), or 1(312) 455-8498 (outside USA)

E: [proteintech@ptglab.com](mailto:proteintech@ptglab.com)  
W: [ptglab.com](http://ptglab.com)

**This product is exclusively available under Proteintech Group brand and is not available to purchase from any other manufacturer.**

## Selected Validation Data



Various lysates were subjected to Tris-Acetate gel system followed by western blot with 32300-1-AP (MEGF8 antibody) at dilution of 1:600 incubated at room temperature for 1.5 hours. This data was developed using the same antibody clone with 32300-1-PBS in a different storage buffer formulation.