

For Research Use Only

MOSPD1 Polyclonal antibody

Catalog Number: 32307-1-AP



Basic Information

Catalog Number: 32307-1-AP	GenBank Accession Number: BC005700	Purification Method: Antigen affinity Purification
Size: 150ul , Concentration: 350 ug/ml by Nanodrop;	GeneID (NCBI): 56180	Recommended Dilutions: WB 1:500-1:3000 IHC 1:50-1:200
Source: Rabbit	UNIPROT ID: Q9UJG1	
Isotype: IgG	Full Name: motile sperm domain containing 1	
Immunogen Catalog Number: AG37532	Calculated MW: 24 kDa	
	Observed MW: 25 kDa	

Applications

Tested Applications: WB, IHC, ELISA	Positive Controls:
Species Specificity: human	WB : MDA-MB-231 cells, PC-3 cells IHC : mouse cerebellum tissue,

Note-IHC: suggested antigen retrieval with **TE buffer pH 9.0; (*) Alternatively, antigen retrieval may be performed with citrate buffer pH 6.0**

Background Information

MOSPD1, or Motile Sperm Domain-Containing Protein 1, is a protein that has been implicated in various biological processes. It is part of a family of proteins characterized by the presence of the major sperm protein domain and two transmembrane domains (PMID: 21792907). The protein is primarily located in the endoplasmic reticulum and Golgi apparatus, and it can also be found in the nucleus under certain conditions. MOSPD1 plays a significant role in the differentiation and proliferation of mesenchymal stem cells (MSCs). Studies have shown that MOSPD1-null embryonic stem cells exhibit impaired differentiation into various cell lineages, including osteoblasts and adipocytes, indicating its importance in MSC proliferation and differentiation (PMID: 26175344). Additionally, MOSPD1 is involved in the switch between mesenchymal and epithelial cells, suggesting its role in developmental regulation.

Storage

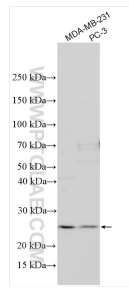
Storage:
Store at -20°C. Stable for one year after shipment.
Storage Buffer:
PBS with 0.02% sodium azide and 50% glycerol, pH7.3
Aliquoting is unnecessary for -20°C storage

*** 20ul sizes contain 0.1% BSA

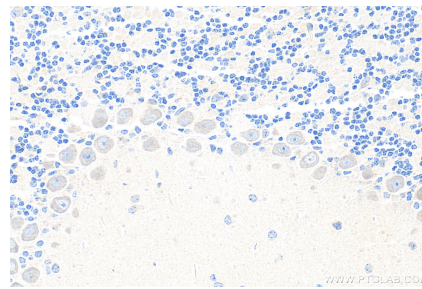
For technical support and original validation data for this product please contact:
T: 1 (888) 4PTGLAB (1-888-478-4522) (toll free in USA), or 1(312) 455-8498 (outside USA)
E: proteintech@ptglab.com
W: ptglab.com

This product is exclusively available under Proteintech Group brand and is not available to purchase from any other manufacturer.

Selected Validation Data



Various lysates were subjected to SDS PAGE followed by western blot with 32307-1-AP (MOSPD1 antibody) at dilution of 1:1500 incubated at room temperature for 1.5 hours.



Immunohistochemical analysis of paraffin-embedded mouse cerebellum tissue slide using 32307-1-AP (MOSPD1 antibody) at dilution of 1:200 (under 40x lens). Heat mediated antigen retrieval with Tris-EDTA buffer (pH 9.0).