

For Research Use Only

# DLL4 Polyclonal antibody

Catalog Number: 32331-1-AP



## Basic Information

### Catalog Number:

32331-1-AP

### Size:

150ul , Concentration: 450 µg/ml by Nanodrop;

### Source:

Rabbit

### Isotype:

IgG

### Immunogen Catalog Number:

AG34664

### GenBank Accession Number:

BC106950

### GeneID (NCBI):

54567

### UNIPROT ID:

Q9NR61

### Full Name:

delta-like 4 (Drosophila)

### Calculated MW:

685 aa, 75 kDa

### Observed MW:

75 kDa

### Purification Method:

Antigen affinity purification

### Recommended Dilutions:

WB 1:500-1:2000

## Applications

### Tested Applications:

WB, ELISA

### Species Specificity:

human, mouse

### Positive Controls:

WB : A431 cells, mouse brain tissue, mouse kidney tissue, mouse lung tissue

## Background Information

DLL4, also named as Delta4, plays a role in the Notch signaling pathway. It activates Notch-1 and Notch-4. Notch signaling is activated upon engagement of the Notch receptor with its ligands, the DSL (Delta, Serrate, Lag2) proteins of single-pass type I membrane proteins. DLL4 is highly expressed in the vascular endothelium and is involved in angiogenesis.

## Storage

### Storage:

Store at -20°C. Stable for one year after shipment.

### Storage Buffer:

PBS with 0.02% sodium azide and 50% glycerol pH 7.3.

Aliquoting is unnecessary for -20°C storage

\*\*\* 20ul sizes contain 0.1% BSA

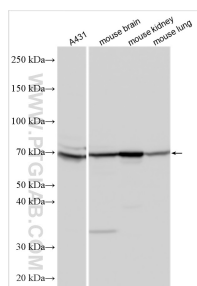
For technical support and original validation data for this product please contact:

T: 1 (888) 4PTGLAB (1-888-478-4522) (toll free in USA), or 1(312) 455-8498 (outside USA)

E: [proteintech@ptglab.com](mailto:proteintech@ptglab.com)  
W: [ptglab.com](http://ptglab.com)

This product is exclusively available under Proteintech Group brand and is not available to purchase from any other manufacturer.

## Selected Validation Data



Various lysates were subjected to SDS PAGE followed by western blot with 32331-1-AP (DLL4 antibody) at dilution of 1:1000 incubated at room temperature for 1.5 hours.