

For Research Use Only

Glycophorin A/CD235a Polyclonal antibody

Catalog Number: 32339-1-AP



Basic Information

Catalog Number: 32339-1-AP	GenBank Accession Number: NM_010369.3	Purification Method: Antigen affinity Purification
Size: 150ul , Concentration: 450 µg/ml by Nanodrop;	GeneID (NCBI): 14934	Recommended Dilutions: IHC 1:500-1:2000
Source: Rabbit	UNIPROT ID: P14220	
Isotype: IgG	Full Name: glycophorin A	
Immunogen Catalog Number: EG1886	Calculated MW: 18kDa	

Applications

Tested Applications: IHC, ELISA	Positive Controls: IHC : mouse placenta tissue,
Species Specificity: mouse	
Note-IHC: suggested antigen retrieval with TE buffer pH 9.0; (*) Alternatively, antigen retrieval may be performed with citrate buffer pH 6.0	

Background Information

Glycophorin A (GYPA) is the major transmembrane sialoglycoprotein in erythrocytes. It is a dimeric type I transmembrane protein carrying 15 closely clustered O-linked tetrasaccharides capped with sialic acid/N-acetylneuraminic acid (Neu5Ac). This 36 kDa protein represents the major sialoglycoprotein of the red blood cell membrane displaying about one million copies per cell. (PMID: 9490702)

Storage

Storage:
Store at -20°C. Stable for one year after shipment.
Storage Buffer:
PBS with 0.02% sodium azide and 50% glycerol, pH7.3
Aliquoting is unnecessary for -20°C storage

*** 20ul sizes contain 0.1% BSA

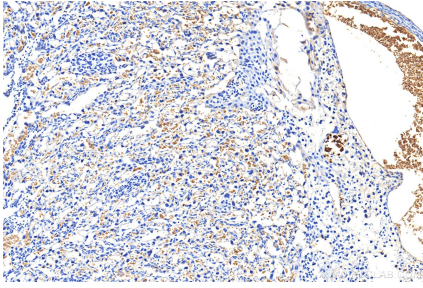
For technical support and original validation data for this product please contact:

T: 1 (888) 4PTGLAB (1-888-478-4522) (toll free in USA), or 1(312) 455-8498 (outside USA)

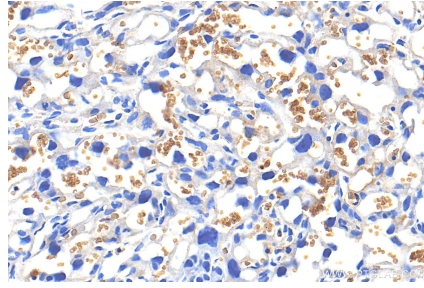
E: proteintech@ptglab.com
W: ptglab.com

This product is exclusively available under Proteintech Group brand and is not available to purchase from any other manufacturer.

Selected Validation Data



Immunohistochemical analysis of paraffin-embedded mouse placenta tissue slide using 32339-1-AP (CD235a/Glycophorin A antibody) at dilution of 1:1000 (under 10x lens). Heat mediated antigen retrieval with Tris-EDTA buffer (pH 9.0).



Immunohistochemical analysis of paraffin-embedded mouse placenta tissue slide using 32339-1-AP (CD235a/Glycophorin A antibody) at dilution of 1:1000 (under 40x lens). Heat mediated antigen retrieval with Tris-EDTA buffer (pH 9.0).