

For Research Use Only

# USP43 Polyclonal antibody

Catalog Number: 32375-1-AP



## Basic Information

Catalog Number:

32375-1-AP

Size:

150ul , Concentration: 490 ug/ml by Nanodrop;

Source:

Rabbit

Isotype:

IgG

Immunogen Catalog Number:

AG36448

GenBank Accession Number:

BC136368

GeneID (NCBI):

124739

UNIPROT ID:

Q70EL4

Full Name:

ubiquitin specific peptidase 43

Observed MW:

70 kDa

Purification Method:

Antigen affinity Purification

Recommended Dilutions:

WB: 1:1000-1:4000

## Applications

Tested Applications:

WB, ELISA

Species Specificity:

human

Positive Controls:

WB : A431 cells, HaCaT cells, Jurkat cells, MDA-MB-231 cells

## Background Information

USP43 belongs to the DUBs family involved in cancer development and progression. The USPs family is the most recognized group of DUBs, characterized by a wide range of structural and functional variability. The distinguishing features of USPs include the unique catalytic core, known as the histidine and cysteine boxes, as well as the presence of zinc finger domains, ubiquitin-binding domains, or ubiquitin-like domains at the N and/or C termini of the catalytic domain (PMID: 16325574). It has 4 isoforms with a molecular weight of 69 kDa, 89 kDa, 122 kDa, 123 kDa.

## Storage

Storage:

Store at -20°C. Stable for one year after shipment.

Storage Buffer:

PBS with 0.02% sodium azide and 50% glycerol, pH7.3

Aliquoting is unnecessary for -20°C storage

\*\*\* 20ul sizes contain 0.1% BSA

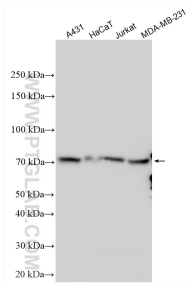
For technical support and original validation data for this product please contact:

T: 1 (888) 4PTGLAB (1-888-478-4522) (toll free in USA), or 1(312) 455-8498 (outside USA)

E: [proteintech@ptglab.com](mailto:proteintech@ptglab.com)  
W: [ptglab.com](http://ptglab.com)

This product is exclusively available under Proteintech Group brand and is not available to purchase from any other manufacturer.

## Selected Validation Data



Various lysates were subjected to SDS PAGE followed by western blot with 32375-1-AP (USP43 antibody) at dilution of 1:2000 incubated at room temperature for 1.5 hours.