

For Research Use Only

# USP43 Polyclonal antibody, PBS Only

Catalog Number: 32375-1-PBS



## Basic Information

<b>Catalog Number:</b> 32375-1-PBS	<b>GenBank Accession Number:</b> BC136368	<b>Purification Method:</b> Antigen affinity Purification
<b>Size:</b> 100ug , Concentration: 1 mg/ml by Nanodrop;	<b>GeneID (NCBI):</b> 124739	
<b>Source:</b> Rabbit	<b>UNIPROT ID:</b> Q70EL4	
<b>Isotype:</b> IgG	<b>Full Name:</b> ubiquitin specific peptidase 43	
<b>Immunogen Catalog Number:</b> AG36448	<b>Observed MW:</b> 70 kDa	

## Applications

**Tested Applications:**  
WB, Indirect ELISA

**Species Specificity:**  
human

## Background Information

USP43 belongs to the DUBs family involved in cancer development and progression. The USPs family is the most recognized group of DUBs, characterized by a wide range of structural and functional variability. The distinguishing features of USPs include the unique catalytic core, known as the histidine and cysteine boxes, as well as the presence of zinc finger domains, ubiquitin-binding domains, or ubiquitin-like domains at the N and/or C termini of the catalytic domain (PMID: 16325574). It has 4 isoforms with a molecular weight of 69 kDa, 89 kDa, 122 kDa, 123 kDa.

## Storage

**Storage:**  
Store at -80°C.

**Storage Buffer:**  
PBS only, pH7.3

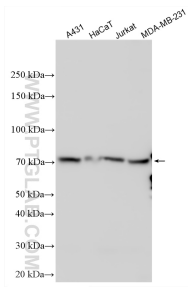
For technical support and original validation data for this product please contact:

T: 1 (888) 4PTGLAB (1-888-478-4522) (toll free  
in USA), or 1(312) 455-8498 (outside USA)

E: [proteintech@ptglab.com](mailto:proteintech@ptglab.com)  
W: [ptglab.com](http://ptglab.com)

**This product is exclusively available under Proteintech Group brand and is not available to purchase from any other manufacturer.**

## Selected Validation Data



Various lysates were subjected to SDS PAGE followed by western blot with 32375-1-AP (USP43 antibody) at dilution of 1:2000 incubated at room temperature for 1.5 hours. This data was developed using the same antibody clone with 32375-1-PBS in a different storage buffer formulation.