

For Research Use Only

# ELA3B Polyclonal antibody

Catalog Number: 32376-1-AP



## Basic Information

### Catalog Number:

32376-1-AP

### Size:

150ul , Concentration: 550 ug/ml by Nanodrop;

### Source:

Rabbit

### Isotype:

IgG

### Immunogen Catalog Number:

AG36965

### GenBank Accession Number:

BC005216

### GeneID (NCBI):

23436

### UNIPROT ID:

P08861

### Full Name:

elastase 3B, pancreatic

### Calculated MW:

29 kDa

### Observed MW:

29-32 kDa

### Purification Method:

Antigen affinity Purification

### Recommended Dilutions:

WB 1:2000-1:16000

## Applications

### Tested Applications:

WB, ELISA

### Species Specificity:

human, mouse, rat

### Positive Controls:

WB : mouse pancreas tissue, rat pancreas tissue

## Background Information

ELA3B, or elastase 3B, is a protein encoded by the human ELA3B gene. It belongs to the elastase family of serine proteases, which are enzymes that cleave peptide bonds in proteins. ELA3B is mainly expressed in the pancreas and is involved in the digestion of dietary proteins. Like other elastases, it plays a role in the degradation of elastin, a key component of connective tissue, as well as other extracellular matrix proteins.

## Storage

### Storage:

Store at -20°C. Stable for one year after shipment.

### Storage Buffer:

PBS with 0.02% sodium azide and 50% glycerol pH 7.3.

Aliquoting is unnecessary for -20°C storage

\*\*\* 20ul sizes contain 0.1% BSA

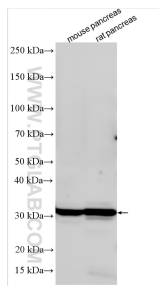
For technical support and original validation data for this product please contact:

T: 1 (888) 4PTGLAB (1-888-478-4522) (toll free in USA), or 1(312) 455-8498 (outside USA)

E: [proteintech@ptglab.com](mailto:proteintech@ptglab.com)  
W: [ptglab.com](http://ptglab.com)

This product is exclusively available under Proteintech Group brand and is not available to purchase from any other manufacturer.

## Selected Validation Data



Various lysates were subjected to SDS PAGE followed by western blot with 32376-1-AP (ELA3B antibody) at dilution of 1:8000 incubated at room temperature for 1.5 hours.