

For Research Use Only

CFHR5 Polyclonal antibody

Catalog Number: 32379-1-AP



Basic Information

Catalog Number:

32379-1-AP

Size:

150ul , Concentration: 550 ug/ml by Nanodrop;

Source:

Rabbit

Isotype:

IgG

Immunogen Catalog Number:

AG37714

GenBank Accession Number:

BC111773

GeneID (NCBI):

81494

UNIPROT ID:

Q9BXR6

Full Name:

complement factor H-related 5

Calculated MW:

569 aa, 64 kDa

Observed MW:

60 kDa

Purification Method:

Antigen affinity Purification

Recommended Dilutions:

WB 1:1000-1:8000

Applications

Tested Applications:

WB, ELISA

Species Specificity:

human

Positive Controls:

WB : HepG2 cells, mouse liver tissue, rat liver tissue

Background Information

Complement factor H-related protein 5 (CFHR5) is a member of the complement factor H (CFH) gene cluster located on chromosome 1. This protein is composed of nine short consensus repeats (SCRs), which are characteristic of regulators of complement activation. It co-localizes with C3 and binds to C3b in a dose-dependent manner, being recruited to tissues damaged by C-reactive protein.

Storage

Storage:

Store at -20°C. Stable for one year after shipment.

Storage Buffer:

PBS with 0.02% sodium azide and 50% glycerol, pH7.3

Aliquoting is unnecessary for -20°C storage

*** 20ul sizes contain 0.1% BSA

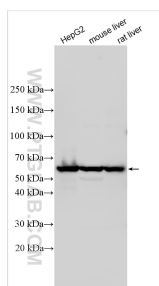
For technical support and original validation data for this product please contact:

T: 1 (888) 4PTGLAB (1-888-478-4522) (toll free in USA), or 1(312) 455-8498 (outside USA)

E: proteintech@ptglab.com
W: ptglab.com

This product is exclusively available under Proteintech Group brand and is not available to purchase from any other manufacturer.

Selected Validation Data



Various lysates were subjected to SDS PAGE followed by western blot with 32379-1-AP (CFHR5 antibody) at dilution of 1:4000 incubated at room temperature for 1.5 hours.