

For Research Use Only

# ARHGAP44 Polyclonal antibody

Catalog Number: 32382-1-AP



## Basic Information

Catalog Number:

32382-1-AP

Size:

150ul , Concentration: 400 ug/ml by Nanodrop;

Source:

Rabbit

Isotype:

IgG

Immunogen Catalog Number:

AG38196

GenBank Accession Number:

NM\_001321166

GeneID (NCBI):

9912

UNIPROT ID:

Q17R89

Full Name:

Rho-type GTPase-activating protein

RICH2

Calculated MW:

818aa, 89 kDa

Observed MW:

80-100 kDa

Purification Method:

Antigen affinity Purification

Recommended Dilutions:

WB 1:5000-1:50000

## Applications

Tested Applications:

WB, ELISA

Species Specificity:

human

Positive Controls:

WB : HEK-293 cells, LNCaP cells

## Background Information

Rho GTPase-activating protein 44 (ARHGAP44) belongs to the Rho GTPase-activating protein (RhoGAP) family, also known as Rich2. ARHGAP44 plays an important role in cytoskeletal dynamics, cellular motility and signaling. Its high expression in osteosarcoma correlates with tumor malignancy, suggesting its potential as a potential therapeutic target. In addition, ARHGAP44 may also be involved in the pathogenesis of diabetes and cardiovascular diseases, and its specific role in these diseases needs to be further investigated in the future.

## Storage

Storage:

Store at -20°C. Stable for one year after shipment.

Storage Buffer:

PBS with 0.02% sodium azide and 50% glycerol pH 7.3.

Aliquoting is unnecessary for -20°C storage

\*\*\* 20ul sizes contain 0.1% BSA

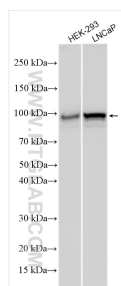
For technical support and original validation data for this product please contact:

T: 1 (888) 4PTGLAB (1-888-478-4522) (toll free in USA), or 1(312) 455-8498 (outside USA)

E: [proteintech@ptglab.com](mailto:proteintech@ptglab.com)  
W: [ptglab.com](http://ptglab.com)

This product is exclusively available under Proteintech Group brand and is not available to purchase from any other manufacturer.

## Selected Validation Data



Various lysates were subjected to SDS PAGE followed by western blot with 32382-1-AP (ARHGAP44 antibody) at dilution of 1:10000 incubated at room temperature for 1.5 hours.