

For Research Use Only

# Fibrinogen gamma chain Polyclonal antibody

Catalog Number: 32404-1-AP



## Basic Information

Catalog Number:

32404-1-AP

Size:

150ul , Concentration: 400 ug/ml by Nanodrop;

Source:

Rabbit

Isotype:

IgG

GenBank Accession Number:

NM\_133862.2

GeneID (NCBI):

99571

UNIPROT ID:

Q8VCM7

Full Name:

fibrinogen gamma chain

Calculated MW:

49kDa

Observed MW:

50 kDa

Purification Method:

Antigen affinity Purification

Recommended Dilutions:

WB 1:5000-1:50000

## Applications

Tested Applications:

WB, ELISA

Species Specificity:

mouse, rat

Positive Controls:

WB : mouse liver tissue, mouse spleen tissue, rat liver tissue

## Background Information

Fibrinogen gamma chain, also known as Fgg. It is an isomeric hexamer, which is linked by disulfide bonds. It contains two groups of three different chains ( $\alpha$ ,  $\beta$  and  $\gamma$ ). The two heterotrimers are head-to-head conformation, and the N-terminal is in a small central domain (by similarity). It is polymerized with fibrinogen  $\alpha$ (FGA) and fibrinogen  $\beta$ (FGB) to form insoluble fibrin matrix. In addition, it plays a role in stabilizing injury in the early stage of wound repair and guiding cell migration in the process of epithelial re-formation. The molecular weight of Fgg is 50 kDa.

## Storage

Storage:

Store at  $-20^{\circ}\text{C}$ . Stable for one year after shipment.

Storage Buffer:

PBS with 0.02% sodium azide and 50% glycerol pH 7.3.

Aliquoting is unnecessary for  $-20^{\circ}\text{C}$  storage

\*\*\* 20ul sizes contain 0.1%BSA

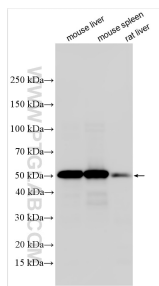
For technical support and original validation data for this product please contact:

T: 1 (888) 4PTGLAB (1-888-478-4522) (toll free in USA), or 1(312) 455-8498 (outside USA)

E: [proteintech@ptglab.com](mailto:proteintech@ptglab.com)  
W: [ptglab.com](http://ptglab.com)

This product is exclusively available under Proteintech Group brand and is not available to purchase from any other manufacturer.

## Selected Validation Data



Various lysates were subjected to SDS PAGE followed by western blot with 32404-1-AP (Fibrinogen gamma chain antibody) at dilution of 1:10000 incubated at room temperature for 1.5 hours.