

For Research Use Only

ORC3L Polyclonal antibody

Catalog Number: 32429-1-AP



Basic Information

Catalog Number:

32429-1-AP

Size:

150ul, Concentration: 350 ug/ml by Nanodrop;

Source:

Rabbit

Isotype:

IgG

Immunogen Catalog Number:

AG37481

GenBank Accession Number:

NM_012381.3

GeneID (NCBI):

23595

UNIPROT ID:

Q9UBD5

Full Name:

origin recognition complex, subunit 3-like (yeast)

Calculated MW:

66 kDa, 82 kDa

Observed MW:

66 kDa, 82 kDa

Purification Method:

Antigen affinity Purification

Recommended Dilutions:

WB 1:500-1:2000

Applications

Tested Applications:

WB, ELISA

Species Specificity:

human

Positive Controls:

WB : HEK-293 cells, HepG2 cells

Background Information

ORC3L, also known as Origin Recognition Complex Subunit 3-Like, is a human gene that encodes a protein which is a subunit of the Origin Recognition Complex (ORC). The ORC is a highly conserved six-subunit protein complex that is essential for the initiation of DNA replication in eukaryotic cells. Studies in yeast have shown that ORC binds specifically to origins of replication and serves as a platform for the assembly of additional initiation factors such as Cdc6 and Mcm proteins.

Storage

Storage:

Store at -20°C. Stable for one year after shipment.

Storage Buffer:

PBS with 0.02% sodium azide and 50% glycerol, pH7.3

Aliquoting is unnecessary for -20°C storage

*** 20ul sizes contain 0.1% BSA

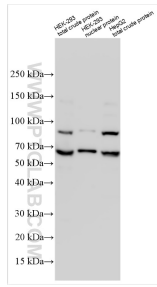
For technical support and original validation data for this product please contact:

T: 1 (888) 4PTGLAB (1-888-478-4522) (toll free in USA), or 1(312) 455-8498 (outside USA)

E: proteintech@ptglab.com
W: ptglab.com

This product is exclusively available under Proteintech Group brand and is not available to purchase from any other manufacturer.

Selected Validation Data



Various lysates were subjected to SDS PAGE followed by western blot with 32429-1-AP (ORC3L antibody) at dilution of 1:1000 incubated at room temperature for 1.5 hours.