

For Research Use Only

CD107a / LAMP1 Polyclonal antibody

Catalog Number: 32435-1-AP



Basic Information

Catalog Number:

32435-1-AP

Size:

150ul, Concentration: 400 ug/ml by Nanodrop;

Source:

Rabbit

Isotype:

IgG

Immunogen Catalog Number:

AG34623

GenBank Accession Number:

NM_001317353

GeneID (NCBI):

16783

UNIPROT ID:

P11438

Full Name:

lysosomal-associated membrane protein 1

Calculated MW:

44 kDa

Observed MW:

90-120 kDa

Purification Method:

Antigen affinity Purification

Recommended Dilutions:

WB 1:500-1:2000

IF/ICC 1:250-1:1000

Applications

Tested Applications:

WB, IF/ICC, ELISA

Species Specificity:

mouse, rat

Positive Controls:

WB: NIH/3T3 cells, C6 cells, HSC-T6 cells, rat kidney tissue, RAW 264.7 cells

IF/ICC: NIH/3T3 cells,

Background Information

LAMP1 (also known as CD107a) is a 90-120 kDa heavily glycosylated membrane protein enriched in the lysosomal membrane. LAMP1 functions to provide selectins with carbohydrate ligands. This protein has also been shown to be a marker of degranulation on lymphocytes such as CD8+ and NK cells and may also play a role in tumor cell differentiation and metastasis.

Storage

Storage:

Store at -20°C. Stable for one year after shipment.

Storage Buffer:

PBS with 0.02% sodium azide and 50% glycerol, pH7.3

Aliquoting is unnecessary for -20°C storage

*** 20ul sizes contain 0.1% BSA

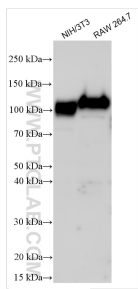
For technical support and original validation data for this product please contact:

T: 1 (888) 4PTGLAB (1-888-478-4522) (toll free in USA), or 1(312) 455-8498 (outside USA)

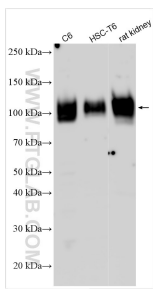
E: proteintech@ptglab.com
W: ptglab.com

This product is exclusively available under Proteintech Group brand and is not available to purchase from any other manufacturer.

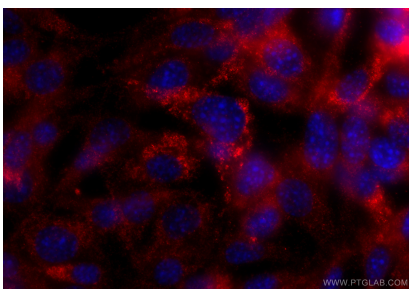
Selected Validation Data



Various lysates were subjected to SDS PAGE followed by western blot with 32435-1-AP (CD107a / LAMP1 antibody) at dilution of 1:1000 incubated at room temperature for 1.5 hours.



Various lysates were subjected to SDS PAGE followed by western blot with 32435-1-AP (CD107a / LAMP1 antibody) at dilution of 1:800 incubated at room temperature for 1.5 hours.



Immunofluorescent analysis of (-20°C Ethanol) fixed NIH/3T3 cells using Lamp1 antibody (32435-1-AP) at dilution of 1:500 and CoraLite®594-Conjugated Goat Anti-Rabbit IgG(H+L) (SA00013-4).