

For Research Use Only

LRRC37A2 Polyclonal antibody, PBS Only

Catalog Number: 32450-1-PBS



Basic Information

Catalog Number: 32450-1-PBS	GenBank Accession Number: NM_001006607	Purification Method: Antigen affinity Purification
Size: 100ug, Concentration: 1 mg/ml by Nanodrop;	GeneID (NCBI): 474170	
Source: Rabbit	UNIPROT ID: A6NM11	
Isotype: IgG	Full Name: leucine rich repeat containing 37, member A2	
Immunogen Catalog Number: AG36343	Calculated MW: 188 kDa	

Applications

Tested Applications:
IHC, Indirect ELISA

Species Specificity:
human, mouse

Background Information

LRRC37A2, or Leucine-Rich Repeat-Containing Protein 37A2, is a protein encoded by the LRRC37A2 gene in humans. It belongs to the leucine-rich repeat (LRR) family, which is involved in protein-protein interactions and various cellular processes. The specific function of LRRC37A2 is not yet fully understood, but it is thought to play a role in immune response, cell signaling, and possibly neurodevelopment.

Storage

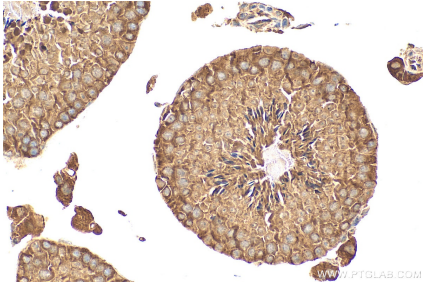
Storage:
Store at -80°C.

Storage Buffer:
PBS only, pH7.3

For technical support and original validation data for this product please contact:
T: 1 (888) 4PTGLAB (1-888-478-4522) (toll free in USA), or 1(312) 455-8498 (outside USA) E: proteintech@ptglab.com
W: ptglab.com

This product is exclusively available under Proteintech Group brand and is not available to purchase from any other manufacturer.

Selected Validation Data



Immunohistochemical analysis of paraffin-embedded mouse testis tissue slide using 32450-1-AP (LRRC37A2 antibody) at dilution of 1:200 (under 40x lens). Heat mediated antigen retrieval with Tris-EDTA buffer (pH 9.0). This data was developed using the same antibody clone with 32450-1-PBS in a different storage buffer formulation.