

For Research Use Only

CD42c Polyclonal antibody

Catalog Number: 32462-1-AP



Basic Information

Catalog Number: 32462-1-AP	GenBank Accession Number: NM_000407.4	Purification Method: Antigen affinity Purification
Size: 150ul , Concentration: 400 ug/ml by Nanodrop;	GeneID (NCBI): 2812	Recommended Dilutions: WB 1:1000-1:4000
Source: Rabbit	UNIPROT ID: P13224	
Isotype: IgG	Full Name: glycoprotein Ib (platelet), beta polypeptide	
Immunogen Catalog Number: AG36521	Calculated MW: 22kDa 206aa	
	Observed MW: 26 kDa	

Applications

Tested Applications: WB, ELISA	Positive Controls: WB : human peripheral blood platelets,
Species Specificity: human	

Background Information

CD42c, also known as platelet glycoprotein Ib beta chain (GP1BB), is a transmembrane protein containing a leucine-rich amino acid sequence (PMID: 3353370). CD42c is covalently linked to platelet glycoprotein Ib alpha chain (CD42b/GP1BA) to form GPIb, which is part of the Glycoprotein Ib-V-IX receptor (GPIb-V-IX) complex that constitutes the receptor for von Willebrand factor (VWF), and mediates platelet adhesion (PMID: 7660135). Mutations in the GP1BB gene have been associated with Bernard-Soulier syndrome, velocardiofacial syndrome, and giant platelet disorder.

Storage

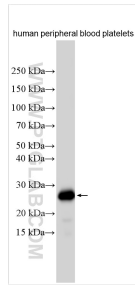
Storage:
Store at -20°C. Stable for one year after shipment.
Storage Buffer:
PBS with 0.02% sodium azide and 50% glycerol pH 7.3.
Aliquoting is unnecessary for -20°C storage

*** 20ul sizes contain 0.1% BSA

For technical support and original validation data for this product please contact:
T: 1 (888) 4PTGLAB (1-888-478-4522) (toll free in USA), or 1(312) 455-8498 (outside USA)
E: proteintech@ptglab.com
W: ptglab.com

This product is exclusively available under Proteintech Group brand and is not available to purchase from any other manufacturer.

Selected Validation Data



Human peripheral blood platelets were subjected to SDS PAGE followed by western blot with 32462-1-AP (CD42c antibody) at dilution of 1:2000 incubated at room temperature for 1.5 hours.