

For Research Use Only

# CD42c Polyclonal antibody, PBS Only

Catalog Number: 32462-1-PBS



## Basic Information

<b>Catalog Number:</b> 32462-1-PBS	<b>GenBank Accession Number:</b> NM_000407.4	<b>Purification Method:</b> Antigen affinity Purification
<b>Size:</b> 100ug , Concentration: 1 mg/ml by Nanodrop;	<b>GeneID (NCBI):</b> 2812	
<b>Source:</b> Rabbit	<b>UNIPROT ID:</b> P13224	
<b>Isotype:</b> IgG	<b>Full Name:</b> glycoprotein Ib (platelet), beta polypeptide	
<b>Immunogen Catalog Number:</b> AG36521	<b>Calculated MW:</b> 22kDa 206aa	
	<b>Observed MW:</b> 26 kDa	

## Applications

**Tested Applications:**  
WB, Indirect ELISA

**Species Specificity:**  
human

## Background Information

CD42c, also known as platelet glycoprotein Ib beta chain (GP1BB), is a transmembrane protein containing a leucine-rich amino acid sequence (PMID: 3353370). CD42c is covalently linked to platelet glycoprotein Ib alpha chain (CD42b/GP1BA) to form GPIb, which is part of the Glycoprotein Ib-V-IX receptor (GPIb-V-IX) complex that constitutes the receptor for von Willebrand factor (VWF), and mediates platelet adhesion (PMID: 7660135). Mutations in the GP1BB gene have been associated with Bernard-Soulier syndrome, velocardiofacial syndrome, and giant platelet disorder.

## Storage

**Storage:**  
Store at -80°C.

**Storage Buffer:**  
PBS Only

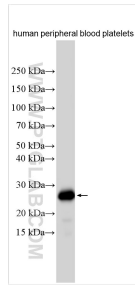
For technical support and original validation data for this product please contact:

T: 1 (888) 4PTGLAB (1-888-478-4522) (toll free in USA), or 1(312) 455-8498 (outside USA)

E: [proteintech@ptglab.com](mailto:proteintech@ptglab.com)  
W: [ptglab.com](http://ptglab.com)

**This product is exclusively available under Proteintech Group brand and is not available to purchase from any other manufacturer.**

## Selected Validation Data



Human peripheral blood platelets were subjected to SDS PAGE followed by western blot with 32462-1-AP (CD42c antibody) at dilution of 1:2000 incubated at room temperature for 1.5 hours. This data was developed using the same antibody clone with 32462-1-PBS in a different storage buffer formulation.