

For Research Use Only

PLXND1 Polyclonal antibody

Catalog Number: 32470-1-AP



Basic Information

Catalog Number: 32470-1-AP	GenBank Accession Number: NM_015103.2	Purification Method: Antigen affinity Purification
Size: 150ul , Concentration: 350 ug/ml by Nanodrop;	GeneID (NCBI): 23129	Recommended Dilutions: WB 1:500-1:2000
Source: Rabbit	UNIPROT ID: Q9Y4D7	
Isotype: IgG	Full Name: plexin D1	
Immunogen Catalog Number: AG38374	Calculated MW: 212kDa 1925aa	
	Observed MW: 220-250	

Applications

Tested Applications: WB, ELISA	Positive Controls: WB : JAR cells,
Species Specificity: human	

Background Information

PLXND1, also known as KIAA0620. It is predicted to be located in the cell membrane. Detected at low levels in heart, placenta, lung, skeletal muscle, kidney, thymus and liver. It is a cell surface receptor for SEMA4A and for class 3 semaphorins, such as SEMA3A, SEMA3C and SEMA3E, which plays an important role in cell-cell signaling, and in regulating the migration of a wide spectrum of cell types. Regulates the migration of thymocytes in the medulla. The protein regulates endothelial cell migration. The molecular weight of PLXND1 is 212 kDa, and the target also has phosphorylation modification as well.

Storage

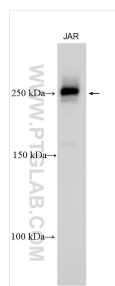
Storage:
Store at -20°C. Stable for one year after shipment.
Storage Buffer:
PBS with 0.02% sodium azide and 50% glycerol pH 7.3.
Aliquoting is unnecessary for -20°C storage

*** 20ul sizes contain 0.1% BSA

For technical support and original validation data for this product please contact:
T: 1 (888) 4PTGLAB (1-888-478-4522) (toll free in USA), or 1(312) 455-8498 (outside USA)
E: proteintech@ptglab.com
W: ptglab.com

This product is exclusively available under Proteintech Group brand and is not available to purchase from any other manufacturer.

Selected Validation Data



Various lysates were subjected to SDS PAGE followed by western blot with 32470-1-AP (PLXND1 antibody) at dilution of 1:1000 incubated at room temperature for 1.5 hours.