

For Research Use Only

JPH4 Polyclonal antibody

Catalog Number: 32471-1-AP



Basic Information

Catalog Number:

32471-1-AP

Size:

150ul , Concentration: 500 ug/ml by Nanodrop;

Source:

Rabbit

Isotype:

IgG

Immunogen Catalog Number:

AG38425

GenBank Accession Number:

NM_001146028.1

GeneID (NCBI):

84502

UNIPROT ID:

Q96JJ6

Full Name:

junctophilin 4

Calculated MW:

66kDa 628aa

Observed MW:

70 kDa

Purification Method:

Antigen affinity Purification

Recommended Dilutions:

WB 1:500-1:1000

Applications

Tested Applications:

WB, ELISA

Species Specificity:

human, mouse, rat

Positive Controls:

WB : HepG2 cells, mouse brain tissue, rat brain tissue

Background Information

JPH4 (Junctophilin 4) is a member of the junctophilin family of transmembrane proteins. JPH4 is involved in the formation of junctional membrane complexes between the plasma membrane and the endoplasmic/sarcoplasmic reticulum in excitable cells. It plays a crucial role in maintaining the structural integrity and function of these complexes. JPH4 is biased in expression in the brain (RPKM 34.3) and endometrium (RPKM 8.7), among other tissues.

Storage

Storage:

Store at -20°C. Stable for one year after shipment.

Storage Buffer:

PBS with 0.02% sodium azide and 50% glycerol pH 7.3.

Aliquoting is unnecessary for -20°C storage

*** 20ul sizes contain 0.1% BSA

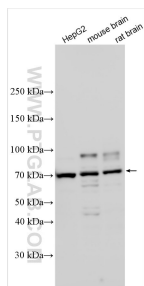
For technical support and original validation data for this product please contact:

T: 1 (888) 4PTGLAB (1-888-478-4522) (toll free in USA), or 1(312) 455-8498 (outside USA)

E: proteintech@ptglab.com
W: ptglab.com

This product is exclusively available under Proteintech Group brand and is not available to purchase from any other manufacturer.

Selected Validation Data



Various lysates were subjected to SDS PAGE followed by western blot with 32471-1-AP (JPH4 antibody) at dilution of 1:800 incubated at room temperature for 1.5 hours.